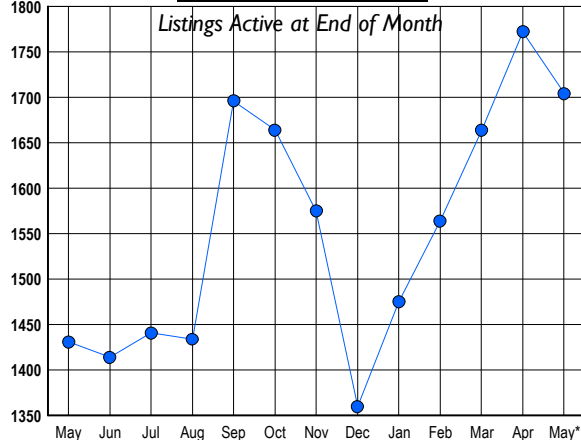


### LISTINGS

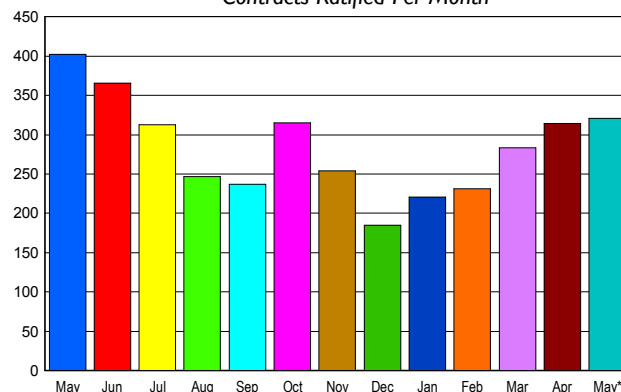
Prices Range	New This Month			Total Actives		
	2008	2007	% Change	2008	2007	% Change
0 - 149,999	5	2	150.0	28	2	1,300.0
150,000 - 199,999	26	10	160.0	78	21	271.4
200,000 - 299,999	86	60	43.3	312	153	103.9
300,000 - 399,999	105	118	-11.0	391	286	36.7
400,000 - 499,999	88	127	-30.7	283	291	-2.7
500,000 - 599,999	46	85	-45.9	154	199	-22.6
600,000 - 699,999	40	59	-32.2	84	97	-13.4
700,000 - 799,999	30	53	-43.4	73	79	-7.6
800,000 - 899,999	33	48	-31.3	60	61	-1.6
900,000 - 999,999	25	30	-16.7	37	43	-14.0
1,000,000 - 1,249,999	20	18	11.1	39	34	14.7
1,250,000 - 1,499,999	21	17	23.5	47	39	20.5
1,500,000 +	40	50	-20.0	118	126	-6.3
<b>TOTALS</b>	<b>565</b>	<b>677</b>	<b>-16.5</b>	<b>1704</b>	<b>1431</b>	<b>19.1</b>

### INVENTORY TREND



### SALES TREND

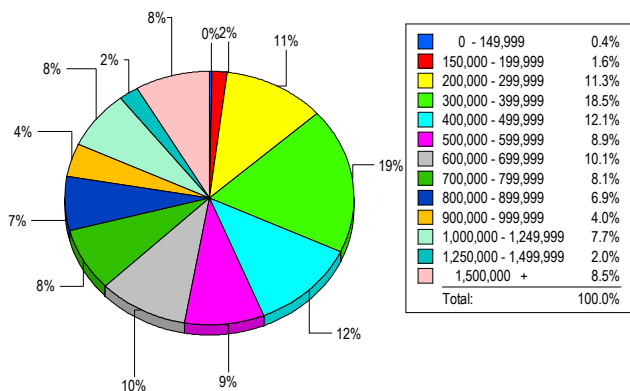
Contracts Ratified Per Month



### CONTRACTS

Price Range	New This Month			Year-To-Date		
	2008	2007	% Change	2008	2007	% Change
0 - 149,999	3	1	200.0	14	10	40.0
150,000 - 199,999	11	12	-8.3	42	37	13.5
200,000 - 299,999	51	42	21.4	206	203	1.5
300,000 - 399,999	59	64	-7.8	238	276	-13.8
400,000 - 499,999	28	62	-54.8	136	241	-43.6
500,000 - 599,999	25	34	-26.5	119	154	-22.7
600,000 - 699,999	30	40	-25.0	123	171	-28.1
700,000 - 799,999	30	33	-9.1	110	138	-20.3
800,000 - 899,999	19	42	-54.8	89	141	-36.9
900,000 - 999,999	20	23	-13.0	65	71	-8.5
1,000,000 - 1,249,999	18	13	38.5	55	58	-5.2
1,250,000 - 1,499,999	10	11	-9.1	53	54	-1.9
1,500,000 +	17	25	-32.0	87	99	-12.1
<b>TOTALS</b>	<b>321</b>	<b>402</b>	<b>-20.1</b>	<b>1337</b>	<b>1653</b>	<b>-19.1</b>

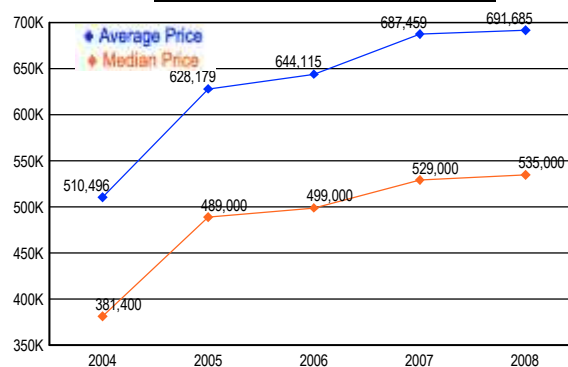
### MARKET BY PRICE RANGE



### SETTLEMENTS

Price Range	New This Month			Year-to-Date		
	2008	2007	% Change	2008	2007	% Change
0 - 149,999	1	0	100.0	17	9	88.9
150,000 - 199,999	4	5	-20.0	25	27	-7.4
200,000 - 299,999	28	32	-12.5	147	183	-19.7
300,000 - 399,999	46	47	-2.1	187	250	-25.2
400,000 - 499,999	30	45	-33.3	114	209	-45.5
500,000 - 599,999	22	25	-12.0	99	132	-25.0
600,000 - 699,999	25	36	-30.6	94	148	-36.5
700,000 - 799,999	20	32	-37.5	87	116	-25.0
800,000 - 899,999	17	28	-39.3	73	110	-33.6
900,000 - 999,999	10	10	0.0	40	52	-23.1
1,000,000 - 1,249,999	19	16	18.8	63	56	12.5
1,250,000 - 1,499,999	5	8	-37.5	30	40	-25.0
1,500,000 +	21	10	110.0	75	74	1.4
<b>TOTALS</b>	<b>248</b>	<b>294</b>	<b>-15.6</b>	<b>1051</b>	<b>1406</b>	<b>-25.2</b>

### AVERAGE & MEDIAN PRICE



DATA SOURCE: Metropolitan Regional Information Systems, Inc. (MRIS)

NOTES: Properties not listed through this Multiple Listing Service are not reflected. The term "sales" represents ratified purchase contracts. Current year information is preliminary and subject to revision. Current year- to- date contract information may not equal the sum of the monthly contract totals reported in