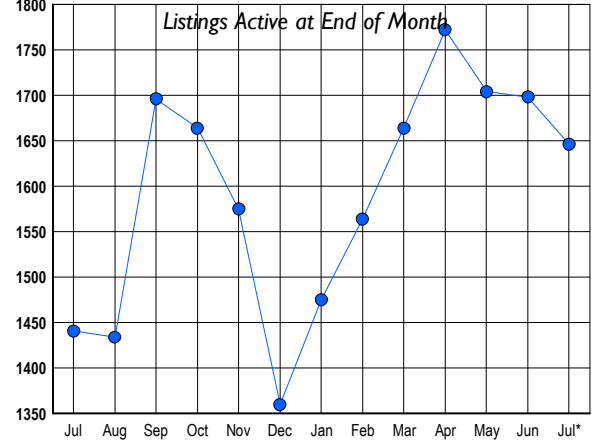




LISTINGS

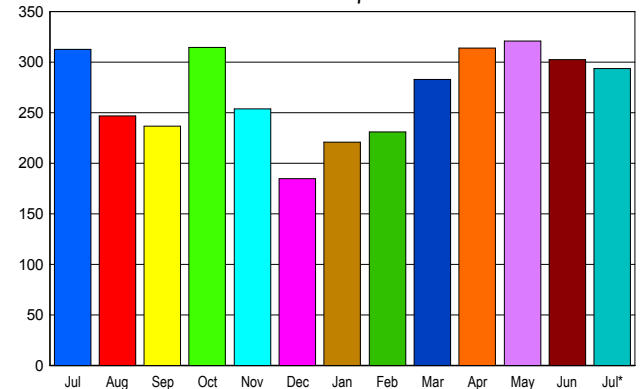
Prices Range	New This Month			Total Actives		
	2008	2007	% Change	2008	2007	% Change
0 - 149,999	14	2	600.0	49	3	1,533.3
150,000 - 199,999	19	12	58.3	98	19	415.8
200,000 - 299,999	114	73	56.2	350	185	89.2
300,000 - 399,999	106	113	-6.2	388	311	24.8
400,000 - 499,999	61	101	-39.6	227	314	-27.7
500,000 - 599,999	35	69	-49.3	133	189	-29.6
600,000 - 699,999	36	50	-28.0	69	104	-33.7
700,000 - 799,999	42	27	55.6	66	58	13.8
800,000 - 899,999	21	24	-12.5	57	52	9.6
900,000 - 999,999	6	14	-57.1	33	33	0.0
1,000,000 - 1,249,999	16	11	45.5	37	37	0.0
1,250,000 - 1,499,999	12	8	50.0	36	27	33.3
1,500,000 +	26	20	30.0	103	109	-5.5
TOTALS	508	524	-3.1	1646	1441	14.2

INVENTORY TREND



SALES TREND

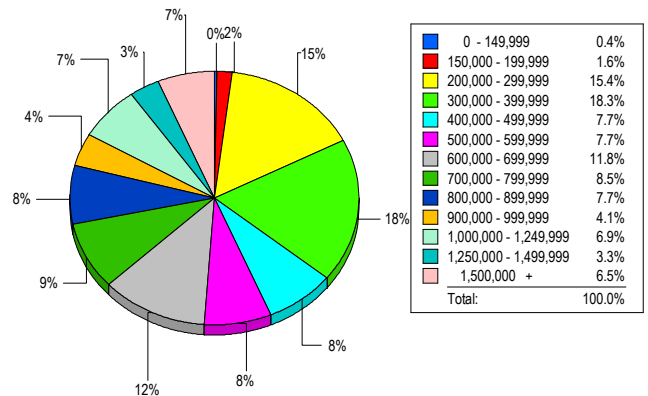
Contracts Ratified Per Month



CONTRACTS

Price Range	New This Month			Year-To-Date		
	2008	2007	% Change	2008	2007	% Change
0 - 149,999	6	1	500.0	23	13	76.9
150,000 - 199,999	20	13	53.8	68	51	33.3
200,000 - 299,999	53	38	39.5	294	279	5.4
300,000 - 399,999	64	64	0.0	339	389	-12.9
400,000 - 499,999	27	46	-41.3	196	333	-41.1
500,000 - 599,999	13	28	-53.6	156	208	-25.0
600,000 - 699,999	27	32	-15.6	179	234	-23.5
700,000 - 799,999	24	29	-17.2	154	205	-24.9
800,000 - 899,999	16	21	-23.8	126	194	-35.1
900,000 - 999,999	5	10	-50.0	78	97	-19.6
1,000,000 - 1,249,999	12	9	33.3	83	82	1.2
1,250,000 - 1,499,999	10	8	25.0	76	76	0.0
1,500,000 +	17	14	21.4	120	134	-10.4
TOTALS	294	313	-6.1	1892	2295	-17.6

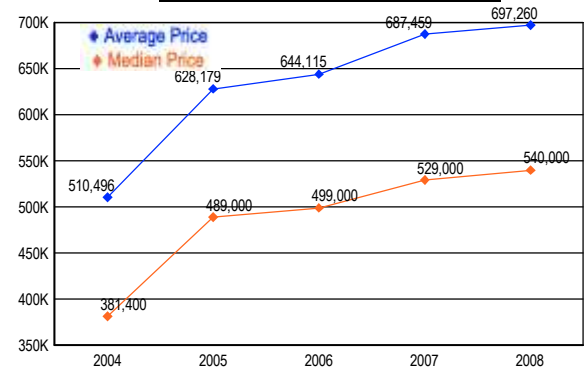
MARKET BY PRICE RANGE



SETTLEMENTS

Price Range	New This Month			Year-to-Date		
	2008	2007	% Change	2008	2007	% Change
0 - 149,999	1	2	-50.0	22	14	57.1
150,000 - 199,999	4	4	0.0	39	46	-15.2
200,000 - 299,999	38	44	-13.6	241	260	-7.3
300,000 - 399,999	45	48	-6.3	289	377	-23.3
400,000 - 499,999	19	46	-58.7	165	305	-45.9
500,000 - 599,999	19	27	-29.6	142	192	-26.0
600,000 - 699,999	29	29	0.0	162	212	-23.6
700,000 - 799,999	21	41	-48.8	140	189	-25.9
800,000 - 899,999	19	39	-51.3	117	182	-35.7
900,000 - 999,999	10	18	-44.4	68	94	-27.7
1,000,000 - 1,249,999	17	20	-15.0	96	100	-4.0
1,250,000 - 1,499,999	8	16	-50.0	52	67	-22.4
1,500,000 +	16	25	-36.0	106	121	-12.4
TOTALS	246	359	-31.5	1639	2159	-24.1

AVERAGE & MEDIAN PRICE



DATA SOURCE: Metropolitan Regional Information Systems, Inc. (MRIS)

NOTES: Properties not listed through this Multiple Listing Service are not reflected. The term "sales" represents ratified purchase contracts. Current year information is preliminary and subject to revision. Current year-to-date contract information may not equal the sum of the monthly contract totals reported in