

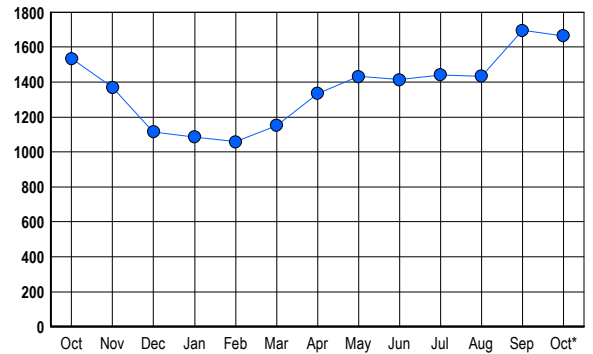


## LISTINGS

Prices Range	New This Month			Total Actives		
	2007	2006	% Change	2007	2006	% Change
0 - 149,999	5	2	150.0	8	2	300.0
150,000 - 199,999	8	8	0.0	26	17	52.9
200,000 - 299,999	102	86	18.6	238	152	56.6
300,000 - 399,999	116	109	6.4	354	277	27.8
400,000 - 499,999	76	83	-8.4	302	274	10.2
500,000 - 599,999	70	93	-24.7	223	219	1.8
600,000 - 699,999	53	56	-5.4	119	143	-16.8
700,000 - 799,999	44	43	2.3	77	96	-19.8
800,000 - 899,999	22	48	-54.2	57	81	-29.6
900,000 - 999,999	18	27	-33.3	38	68	-44.1
1,000,000 - 1,249,999	12	15	-20.0	46	39	17.9
1,250,000 - 1,499,999	17	21	-19.0	46	47	-2.1
1,500,000 +	39	39	0.0	130	119	9.2
<b>TOTALS</b>	<b>582</b>	<b>630</b>	<b>-7.6</b>	<b>1664</b>	<b>1534</b>	<b>8.5</b>

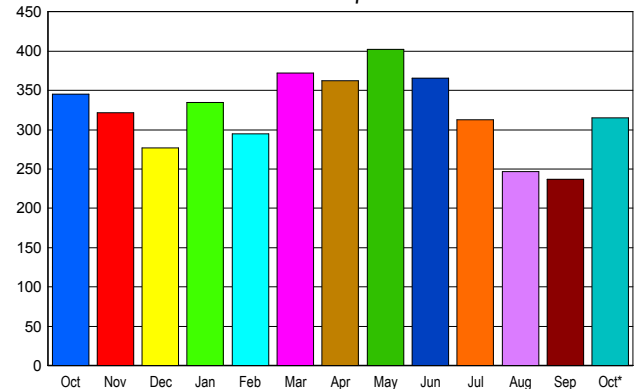
## INVENTORY TREND

Listings Active at End of Month



## SALES TREND

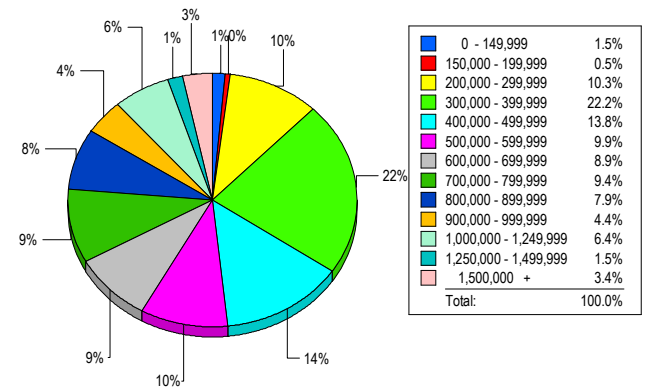
Contracts Ratified Per Month



## CONTRACTS

Price Range	New This Month			Year-To-Date		
	2007	2006	% Change	2007	2006	% Change
0 - 149,999	5	2	150.0	40	19	110.5
150,000 - 199,999	4	12	-66.7	59	83	-28.9
200,000 - 299,999	41	60	-31.7	378	487	-22.4
300,000 - 399,999	64	68	-5.9	512	664	-22.9
400,000 - 499,999	39	48	-18.8	433	493	-12.2
500,000 - 599,999	31	30	3.3	283	365	-22.5
600,000 - 699,999	22	29	-24.1	288	329	-12.5
700,000 - 799,999	34	36	-5.6	278	309	-10.0
800,000 - 899,999	13	18	-27.8	237	166	42.8
900,000 - 999,999	12	5	140.0	121	108	12.0
1,000,000 - 1,249,999	10	7	42.9	111	117	-5.1
1,250,000 - 1,499,999	14	12	16.7	99	122	-18.9
1,500,000 +	26	18	44.4	188	194	-3.1
<b>TOTALS</b>	<b>315</b>	<b>345</b>	<b>-8.7</b>	<b>3027</b>	<b>3456</b>	<b>-12.4</b>

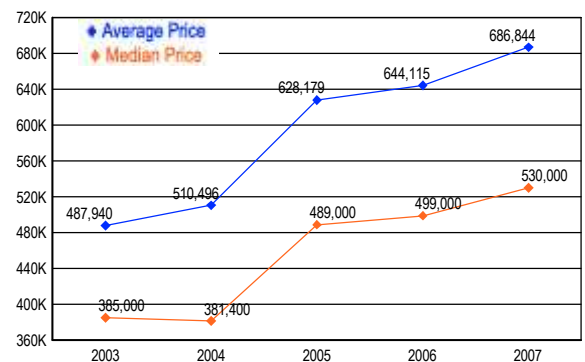
## MARKET BY PRICE RANGE



## SETTLEMENTS

Price Range	New This Month			Year-to-Date		
	2007	2006	% Change	2007	2006	% Change
0 - 149,999	3	0	300.0	36	23	56.5
150,000 - 199,999	1	6	-83.3	61	77	-20.8
200,000 - 299,999	21	44	-52.3	353	445	-20.7
300,000 - 399,999	45	54	-16.7	522	630	-17.1
400,000 - 499,999	28	24	16.7	400	480	-16.7
500,000 - 599,999	20	22	-9.1	261	355	-26.5
600,000 - 699,999	18	24	-25.0	275	314	-12.4
700,000 - 799,999	19	15	26.7	269	297	-9.4
800,000 - 899,999	16	9	77.8	238	183	30.1
900,000 - 999,999	9	5	80.0	126	111	13.5
1,000,000 - 1,249,999	13	5	160.0	134	147	-8.8
1,250,000 - 1,499,999	3	3	0.0	82	97	-15.5
1,500,000 +	7	9	-22.2	168	190	-11.6
<b>TOTALS</b>	<b>203</b>	<b>220</b>	<b>-7.7</b>	<b>2925</b>	<b>3349</b>	<b>-12.7</b>

## AVERAGE & MEDIAN PRICE



DATA SOURCE: Metropolitan Regional Information Systems, Inc. (MRIS)

NOTES: Properties not listed through this Multiple Listing Service are not reflected. The term "sales" represents ratified purchase contracts. Current year information is preliminary and subject to revision. Current year-to-date contract information may not equal the sum of the monthly contract totals reported in