

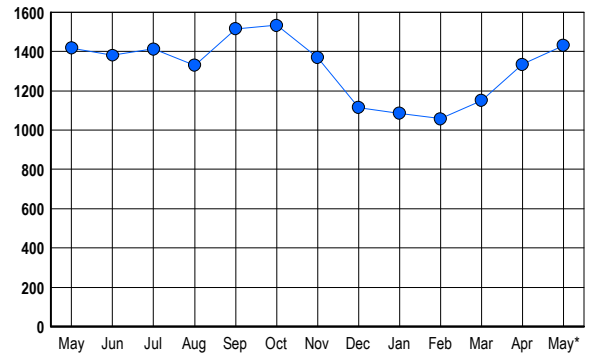


LISTINGS

| Prices Range | New This Month | | | Total Actives | | |
|-----------------------|----------------|------------|--------------|---------------|-------------|------------|
| | 2007 | 2006 | % Change | 2007 | 2006 | % Change |
| 0 - 149,999 | 2 | 2 | 0.0 | 2 | 2 | 0.0 |
| 150,000 - 199,999 | 10 | 7 | 42.9 | 21 | 4 | 425.0 |
| 200,000 - 299,999 | 60 | 94 | -36.2 | 153 | 127 | 20.5 |
| 300,000 - 399,999 | 118 | 128 | -7.8 | 286 | 212 | 34.9 |
| 400,000 - 499,999 | 127 | 107 | 18.7 | 291 | 256 | 13.7 |
| 500,000 - 599,999 | 85 | 88 | -3.4 | 199 | 208 | -4.3 |
| 600,000 - 699,999 | 59 | 87 | -32.2 | 97 | 146 | -33.6 |
| 700,000 - 799,999 | 53 | 85 | -37.6 | 79 | 108 | -26.9 |
| 800,000 - 899,999 | 48 | 47 | 2.1 | 61 | 67 | -9.0 |
| 900,000 - 999,999 | 30 | 34 | -11.8 | 43 | 63 | -31.7 |
| 1,000,000 - 1,249,999 | 18 | 25 | -28.0 | 34 | 38 | -10.5 |
| 1,250,000 - 1,499,999 | 17 | 40 | -57.5 | 39 | 59 | -33.9 |
| 1,500,000 + | 50 | 57 | -12.3 | 126 | 128 | -1.6 |
| TOTALS | 677 | 801 | -15.5 | 1431 | 1418 | 0.9 |

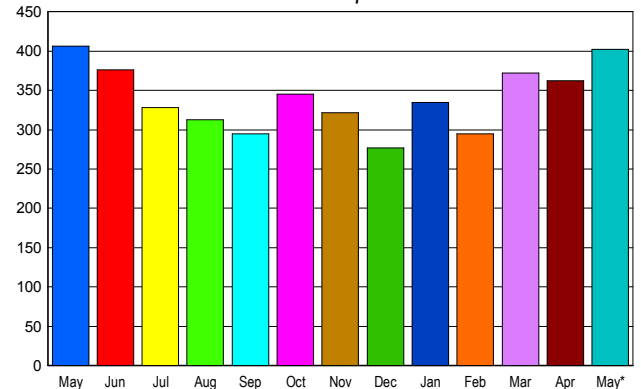
INVENTORY TREND

Listings Active at End of Month



SALES TREND

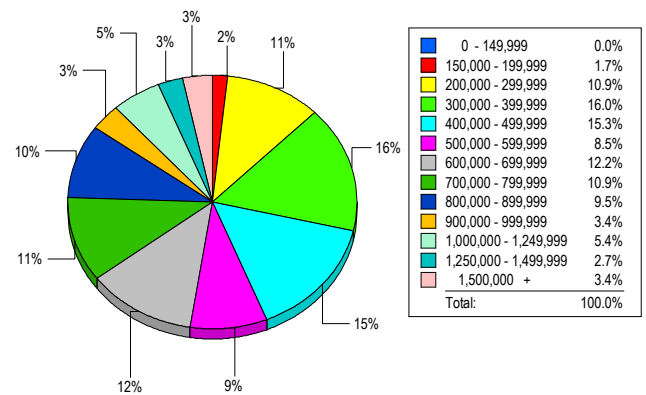
Contracts Ratified Per Month



CONTRACTS

| Price Range | New This Month | | | Year-To-Date | | |
|-----------------------|----------------|------------|-------------|--------------|-------------|--------------|
| | 2007 | 2006 | % Change | 2007 | 2006 | % Change |
| 0 - 149,999 | 1 | 2 | -50.0 | 10 | 14 | -28.6 |
| 150,000 - 199,999 | 12 | 10 | 20.0 | 37 | 51 | -27.5 |
| 200,000 - 299,999 | 42 | 52 | -19.2 | 203 | 256 | -20.7 |
| 300,000 - 399,999 | 64 | 71 | -9.9 | 276 | 353 | -21.8 |
| 400,000 - 499,999 | 62 | 57 | 8.8 | 241 | 261 | -7.7 |
| 500,000 - 599,999 | 34 | 42 | -19.0 | 154 | 202 | -23.8 |
| 600,000 - 699,999 | 40 | 30 | 33.3 | 171 | 158 | 8.2 |
| 700,000 - 799,999 | 33 | 39 | -15.4 | 138 | 167 | -17.4 |
| 800,000 - 899,999 | 42 | 26 | 61.5 | 141 | 87 | 62.1 |
| 900,000 - 999,999 | 23 | 13 | 76.9 | 71 | 60 | 18.3 |
| 1,000,000 - 1,249,999 | 13 | 18 | -27.8 | 58 | 67 | -13.4 |
| 1,250,000 - 1,499,999 | 11 | 18 | -38.9 | 54 | 73 | -26.0 |
| 1,500,000 + | 25 | 28 | -10.7 | 99 | 114 | -13.2 |
| TOTALS | 402 | 406 | -1.0 | 1653 | 1863 | -11.3 |

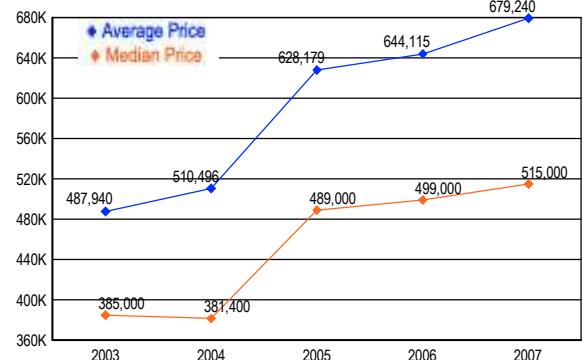
MARKET BY PRICE RANGE



SETTLEMENTS

| Price Range | New This Month | | | Year-to-Date | | |
|-----------------------|----------------|------------|--------------|--------------|-------------|--------------|
| | 2007 | 2006 | % Change | 2007 | 2006 | % Change |
| 0 - 149,999 | 0 | 2 | -100.0 | 9 | 17 | -47.1 |
| 150,000 - 199,999 | 5 | 8 | -37.5 | 27 | 50 | -46.0 |
| 200,000 - 299,999 | 32 | 42 | -23.8 | 183 | 220 | -16.8 |
| 300,000 - 399,999 | 47 | 55 | -14.5 | 250 | 323 | -22.6 |
| 400,000 - 499,999 | 45 | 66 | -31.8 | 209 | 238 | -12.2 |
| 500,000 - 599,999 | 25 | 36 | -30.6 | 132 | 167 | -21.0 |
| 600,000 - 699,999 | 36 | 27 | 33.3 | 148 | 132 | 12.1 |
| 700,000 - 799,999 | 32 | 27 | 18.5 | 116 | 137 | -15.3 |
| 800,000 - 899,999 | 28 | 17 | 64.7 | 110 | 73 | 50.7 |
| 900,000 - 999,999 | 10 | 18 | -44.4 | 52 | 59 | -11.9 |
| 1,000,000 - 1,249,999 | 16 | 14 | 14.3 | 56 | 59 | -5.1 |
| 1,250,000 - 1,499,999 | 8 | 9 | -11.1 | 40 | 44 | -9.1 |
| 1,500,000 + | 10 | 26 | -61.5 | 74 | 83 | -10.8 |
| TOTALS | 294 | 347 | -15.3 | 1406 | 1602 | -12.2 |

AVERAGE & MEDIAN PRICE



DATA SOURCE: Metropolitan Regional Information Systems, Inc. (MRIS)

NOTES: Properties not listed through this Multiple Listing Service are not reflected. The term "sales" represents ratified purchase contracts. Current year information is preliminary and subject to revision. Current year-to-date contract information may not equal the sum of the monthly contract totals reported in