

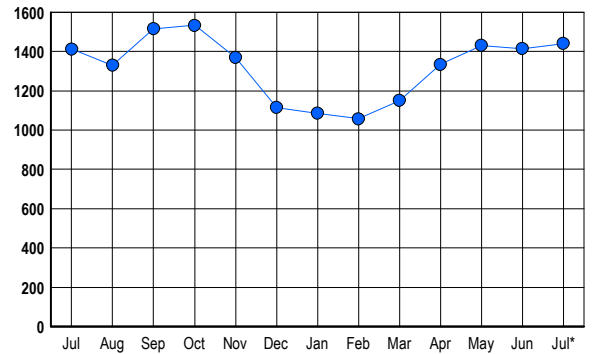


## LISTINGS

Prices Range	New This Month			Total Actives		
	2007	2006	% Change	2007	2006	% Change
0 - 149,999	2	1	100.0	3	0	300.0
150,000 - 199,999	12	9	33.3	19	14	35.7
200,000 - 299,999	73	61	19.7	185	142	30.3
300,000 - 399,999	113	93	21.5	311	234	32.9
400,000 - 499,999	101	107	-5.6	314	291	7.9
500,000 - 599,999	69	73	-5.5	189	190	-0.5
600,000 - 699,999	50	54	-7.4	104	140	-25.7
700,000 - 799,999	27	39	-30.8	58	84	-31.0
800,000 - 899,999	24	28	-14.3	52	64	-18.8
900,000 - 999,999	14	33	-57.6	33	63	-47.6
1,000,000 - 1,249,999	11	15	-26.7	37	33	12.1
1,250,000 - 1,499,999	8	11	-27.3	27	53	-49.1
1,500,000 +	20	19	5.3	109	105	3.8
<b>TOTALS</b>	<b>524</b>	<b>543</b>	<b>-3.5</b>	<b>1441</b>	<b>1413</b>	<b>2.0</b>

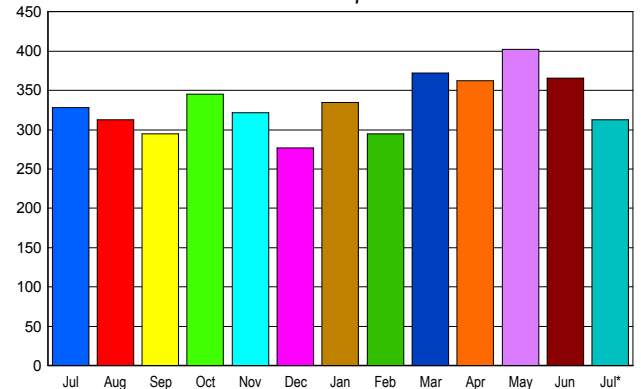
## INVENTORY TREND

Listings Active at End of Month



## SALES TREND

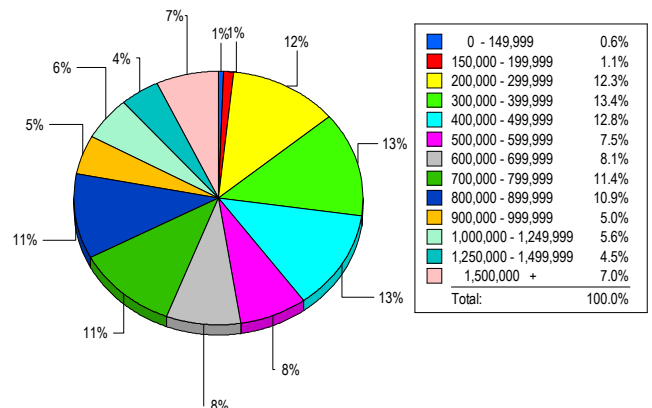
Contracts Ratified Per Month



## CONTRACTS

Price Range	New This Month			Year-To-Date		
	2007	2006	% Change	2007	2006	% Change
0 - 149,999	1	0	100.0	13	17	-23.5
150,000 - 199,999	13	5	160.0	51	56	-8.9
200,000 - 299,999	38	51	-25.5	279	346	-19.4
300,000 - 399,999	64	54	18.5	389	487	-20.1
400,000 - 499,999	46	51	-9.8	333	362	-8.0
500,000 - 599,999	28	36	-22.2	208	278	-25.2
600,000 - 699,999	32	36	-11.1	234	238	-1.7
700,000 - 799,999	29	28	3.6	205	227	-9.7
800,000 - 899,999	21	22	-4.5	194	123	57.7
900,000 - 999,999	10	10	0.0	97	89	9.0
1,000,000 - 1,249,999	9	14	-35.7	82	92	-10.9
1,250,000 - 1,499,999	8	5	60.0	76	91	-16.5
1,500,000 +	14	16	-12.5	134	151	-11.3
<b>TOTALS</b>	<b>313</b>	<b>328</b>	<b>-4.6</b>	<b>2295</b>	<b>2557</b>	<b>-10.2</b>

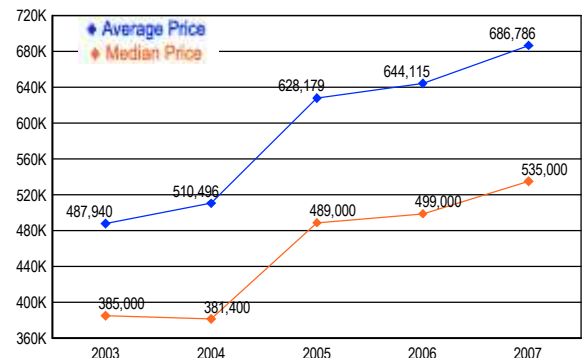
## MARKET BY PRICE RANGE



## SETTLEMENTS

Price Range	New This Month			Year-to-Date		
	2007	2006	% Change	2007	2006	% Change
0 - 149,999	2	1	100.0	14	22	-36.4
150,000 - 199,999	4	6	-33.3	46	63	-27.0
200,000 - 299,999	44	32	37.5	260	309	-15.9
300,000 - 399,999	48	60	-20.0	377	458	-17.7
400,000 - 499,999	46	46	0.0	305	340	-10.3
500,000 - 599,999	27	36	-25.0	192	258	-25.6
600,000 - 699,999	29	35	-17.1	212	211	0.5
700,000 - 799,999	41	36	13.9	189	221	-14.5
800,000 - 899,999	39	19	105.3	182	125	45.6
900,000 - 999,999	18	9	100.0	94	88	6.8
1,000,000 - 1,249,999	20	18	11.1	100	105	-4.8
1,250,000 - 1,499,999	16	12	33.3	67	73	-8.2
1,500,000 +	25	15	66.7	121	136	-11.0
<b>TOTALS</b>	<b>359</b>	<b>325</b>	<b>10.5</b>	<b>2159</b>	<b>2409</b>	<b>-10.4</b>

## AVERAGE & MEDIAN PRICE



DATA SOURCE: Metropolitan Regional Information Systems, Inc. (MRIS)

NOTES: Properties not listed through this Multiple Listing Service are not reflected. The term "sales" represents ratified purchase contracts. Current year information is preliminary and subject to revision. Current year-to-date contract information may not equal the sum of the monthly contract totals reported in