

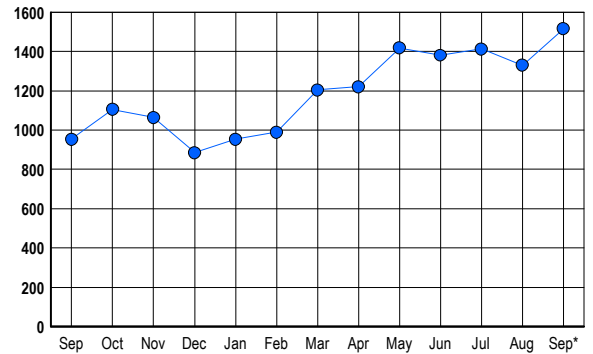


LISTINGS

Prices Range	New This Month			Total Actives		
	2006	2005	% Change	2006	2005	% Change
0 - 149,999	2	2	0.0	3	2	50.0
150,000 - 199,999	7	15	-53.3	18	10	80.0
200,000 - 299,999	59	75	-21.3	146	75	94.7
300,000 - 399,999	103	130	-20.8	272	144	88.9
400,000 - 499,999	111	119	-6.7	308	161	91.3
500,000 - 599,999	90	112	-19.6	199	130	53.1
600,000 - 699,999	82	88	-6.8	148	91	62.6
700,000 - 799,999	70	74	-5.4	98	67	46.3
800,000 - 899,999	36	47	-23.4	66	51	29.4
900,000 - 999,999	30	32	-6.3	60	42	42.9
1,000,000 - 1,249,999	25	32	-21.9	37	29	27.6
1,250,000 - 1,499,999	27	32	-15.6	53	33	60.6
1,500,000 +	63	76	-17.1	108	119	-9.2
TOTALS	705	834	-15.5	1516	954	58.9

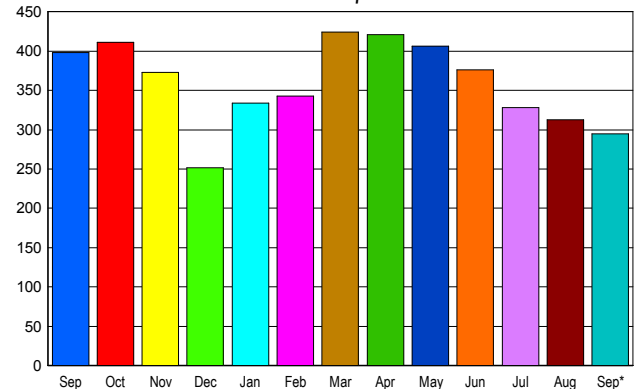
INVENTORY TREND

Listings Active at End of Month



SALES TREND

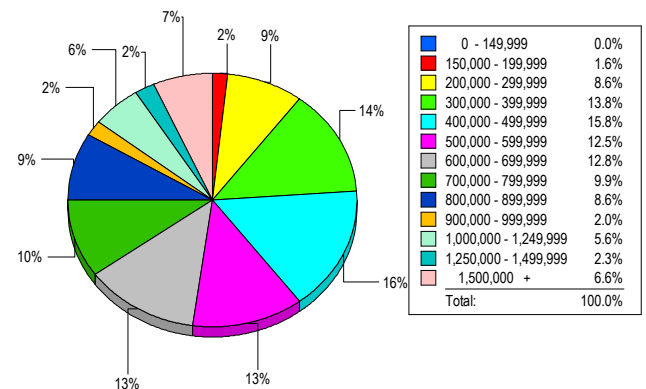
Contracts Ratified Per Month



CONTRACTS

Price Range	New This Month			Year-To-Date		
	2006	2005	% Change	2006	2005	% Change
0 - 149,999	2	4	-50.0	18	66	-72.7
150,000 - 199,999	11	17	-35.3	73	203	-64.0
200,000 - 299,999	41	53	-22.6	434	483	-10.1
300,000 - 399,999	59	73	-19.2	595	739	-19.5
400,000 - 499,999	45	62	-27.4	456	606	-24.8
500,000 - 599,999	24	42	-42.9	333	373	-10.7
600,000 - 699,999	40	49	-18.4	300	389	-22.9
700,000 - 799,999	17	24	-29.2	274	308	-11.0
800,000 - 899,999	14	19	-26.3	149	205	-27.3
900,000 - 999,999	14	16	-12.5	103	143	-28.0
1,000,000 - 1,249,999	11	12	-8.3	110	94	17.0
1,250,000 - 1,499,999	5	14	-64.3	109	118	-7.6
1,500,000 +	12	13	-7.7	174	178	-2.2
TOTALS	295	398	-25.9	3128	3905	-19.9

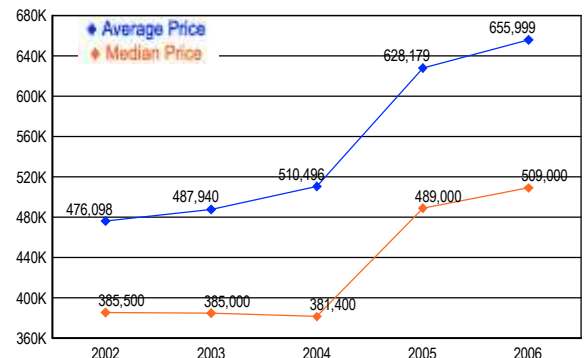
MARKET BY PRICE RANGE



SETTLEMENTS

Price Range	New This Month			Year-to-Date		
	2006	2005	% Change	2006	2005	% Change
0 - 149,999	0	2	-100.0	22	56	-60.7
150,000 - 199,999	5	13	-61.5	71	195	-63.6
200,000 - 299,999	26	43	-39.5	393	470	-16.4
300,000 - 399,999	42	61	-31.1	570	646	-11.8
400,000 - 499,999	48	56	-14.3	451	579	-22.1
500,000 - 599,999	38	39	-2.6	331	361	-8.3
600,000 - 699,999	39	22	77.3	288	318	-9.4
700,000 - 799,999	30	28	7.1	279	303	-7.9
800,000 - 899,999	26	21	23.8	173	236	-26.7
900,000 - 999,999	6	17	-64.7	106	148	-28.4
1,000,000 - 1,249,999	17	9	88.9	141	140	0.7
1,250,000 - 1,499,999	7	11	-36.4	92	118	-22.0
1,500,000 +	20	12	66.7	179	173	3.5
TOTALS	304	334	-9.0	3096	3743	-17.3

AVERAGE & MEDIAN PRICE



DATA SOURCE: Metropolitan Regional Information Systems, Inc. (MRIS)

NOTES: Properties not listed through this Multiple Listing Service are not reflected. The term "sales" represents ratified purchase contracts. Current year information is preliminary and subject to revision. Current year-to-date contract information may not equal the sum of the monthly contract totals reported in