

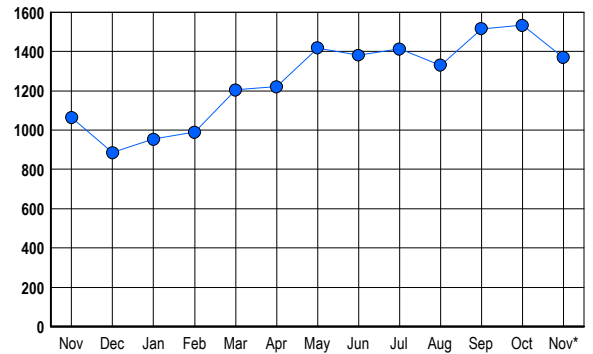


LISTINGS

Prices Range	New This Month			Total Actives		
	2006	2005	% Change	2006	2005	% Change
0 - 149,999	0	4	-100.0	3	4	-25.0
150,000 - 199,999	10	18	-44.4	13	16	-18.8
200,000 - 299,999	55	64	-14.1	136	102	33.3
300,000 - 399,999	92	117	-21.4	274	204	34.3
400,000 - 499,999	81	91	-11.0	258	179	44.1
500,000 - 599,999	55	53	3.8	177	135	31.1
600,000 - 699,999	43	56	-23.2	123	100	23.0
700,000 - 799,999	29	40	-27.5	85	73	16.4
800,000 - 899,999	14	32	-56.3	64	45	42.2
900,000 - 999,999	11	16	-31.3	54	30	80.0
1,000,000 - 1,249,999	10	11	-9.1	41	33	24.2
1,250,000 - 1,499,999	6	16	-62.5	38	38	0.0
1,500,000 +	24	21	14.3	103	105	-1.9
TOTALS	430	539	-20.2	1369	1064	28.7

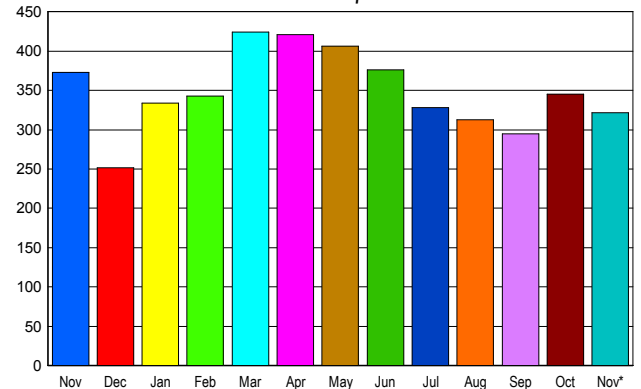
INVENTORY TREND

Listings Active at End of Month



SALES TREND

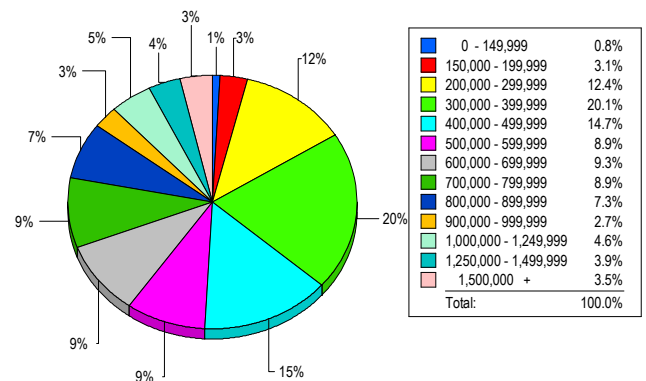
Contracts Ratified Per Month



CONTRACTS

Price Range	New This Month			Year-To-Date		
	2006	2005	% Change	2006	2005	% Change
0 - 149,999	0	4	-100.0	20	73	-72.6
150,000 - 199,999	8	24	-66.7	88	239	-63.2
200,000 - 299,999	52	50	4.0	534	566	-5.7
300,000 - 399,999	63	74	-14.9	720	866	-16.9
400,000 - 499,999	44	54	-18.5	536	704	-23.9
500,000 - 599,999	40	30	33.3	405	456	-11.2
600,000 - 699,999	31	30	3.3	360	453	-20.5
700,000 - 799,999	26	38	-31.6	335	387	-13.4
800,000 - 899,999	15	25	-40.0	182	252	-27.8
900,000 - 999,999	14	16	-12.5	122	178	-31.5
1,000,000 - 1,249,999	10	5	100.0	127	111	14.4
1,250,000 - 1,499,999	6	9	-33.3	130	140	-7.1
1,500,000 +	13	14	-7.1	207	223	-7.2
TOTALS	322	373	-13.7	3766	4648	-19.0

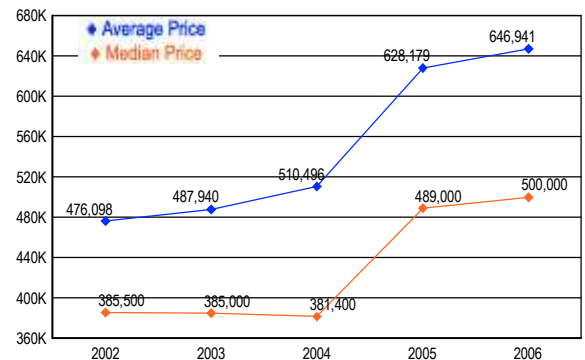
MARKET BY PRICE RANGE



SETTLEMENTS

Price Range	New This Month			Year-to-Date		
	2006	2005	% Change	2006	2005	% Change
0 - 149,999	2	3	-33.3	25	64	-60.9
150,000 - 199,999	8	15	-46.7	86	227	-62.1
200,000 - 299,999	32	42	-23.8	483	570	-15.3
300,000 - 399,999	52	56	-7.1	690	772	-10.6
400,000 - 499,999	38	49	-22.4	520	695	-25.2
500,000 - 599,999	23	46	-50.0	379	454	-16.5
600,000 - 699,999	24	31	-22.6	340	395	-13.9
700,000 - 799,999	23	31	-25.8	321	364	-11.8
800,000 - 899,999	19	19	0.0	203	286	-29.0
900,000 - 999,999	7	13	-46.2	118	175	-32.6
1,000,000 - 1,249,999	12	14	-14.3	159	168	-5.4
1,250,000 - 1,499,999	10	14	-28.6	107	144	-25.7
1,500,000 +	9	17	-47.1	199	204	-2.5
TOTALS	259	350	-26.0	3630	4518	-19.7

AVERAGE & MEDIAN PRICE



DATA SOURCE: Metropolitan Regional Information Systems, Inc. (MRIS)

NOTES: Properties not listed through this Multiple Listing Service are not reflected. The term "sales" represents ratified purchase contracts. Current year information is preliminary and subject to revision. Current year- to- date contract information may not equal the sum of the monthly contract totals reported in