

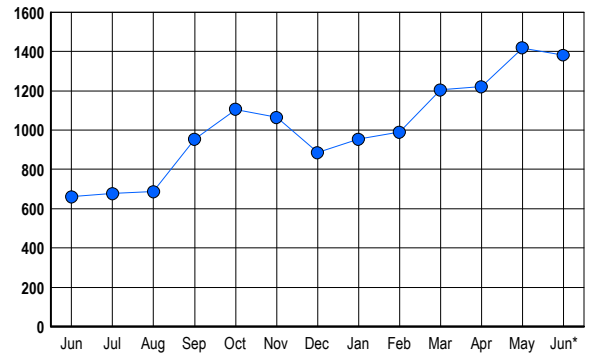


LISTINGS

Prices Range	New This Month			Total Actives		
	2006	2005	% Change	2006	2005	% Change
0 - 149,999	3	11	-72.7	1	6	-83.3
150,000 - 199,999	7	20	-65.0	5	14	-64.3
200,000 - 299,999	83	59	40.7	133	40	232.5
300,000 - 399,999	127	107	18.7	197	90	118.9
400,000 - 499,999	134	113	18.6	282	130	116.9
500,000 - 599,999	98	75	30.7	190	83	128.9
600,000 - 699,999	74	85	-12.9	140	63	122.2
700,000 - 799,999	56	64	-12.5	97	36	169.4
800,000 - 899,999	28	50	-44.0	67	31	116.1
900,000 - 999,999	43	34	26.5	59	33	78.8
1,000,000 - 1,249,999	22	24	-8.3	35	23	52.2
1,250,000 - 1,499,999	28	16	75.0	57	29	96.6
1,500,000 +	41	35	17.1	118	82	43.9
TOTALS	744	693	7.4	1381	660	109.2

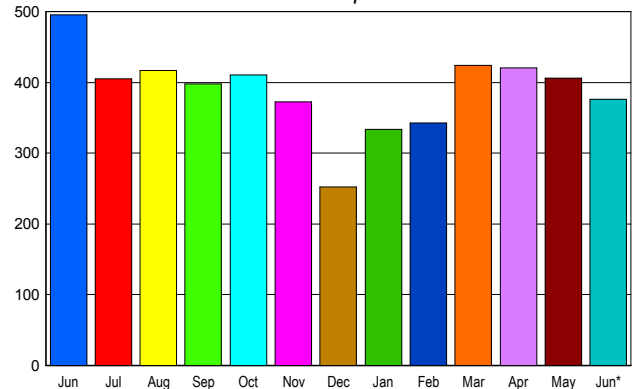
INVENTORY TREND

Listings Active at End of Month



SALES TREND

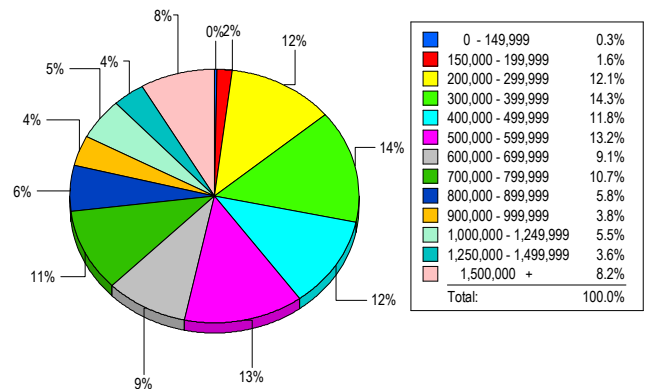
Contracts Ratified Per Month



CONTRACTS

Price Range	New This Month			Year-To-Date		
	2006	2005	% Change	2006	2005	% Change
0 - 149,999	3	9	-66.7	17	60	-71.7
150,000 - 199,999	4	17	-76.5	54	156	-65.4
200,000 - 299,999	49	65	-24.6	303	333	-9.0
300,000 - 399,999	86	87	-1.1	438	532	-17.7
400,000 - 499,999	54	68	-20.6	315	405	-22.2
500,000 - 599,999	34	47	-27.7	237	263	-9.9
600,000 - 699,999	43	51	-15.7	202	252	-19.8
700,000 - 799,999	31	50	-38.0	200	226	-11.5
800,000 - 899,999	11	29	-62.1	100	139	-28.1
900,000 - 999,999	17	28	-39.3	78	107	-27.1
1,000,000 - 1,249,999	10	12	-16.7	76	69	10.1
1,250,000 - 1,499,999	17	14	21.4	87	87	0.0
1,500,000 +	17	19	-10.5	131	135	-3.0
TOTALS	376	496	-24.2	2238	2764	-19.0

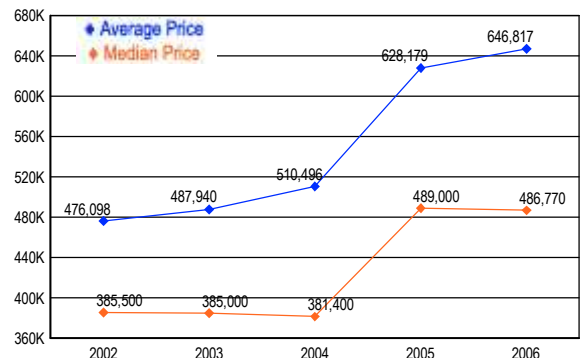
MARKET BY PRICE RANGE



SETTLEMENTS

Price Range	New This Month			Year-to-Date		
	2006	2005	% Change	2006	2005	% Change
0 - 149,999	1	4	-75.0	19	46	-58.7
150,000 - 199,999	6	16	-62.5	57	154	-63.0
200,000 - 299,999	44	42	4.8	269	303	-11.2
300,000 - 399,999	52	57	-8.8	389	443	-12.2
400,000 - 499,999	43	75	-42.7	289	372	-22.3
500,000 - 599,999	48	42	14.3	216	224	-3.6
600,000 - 699,999	33	23	43.5	169	193	-12.4
700,000 - 799,999	39	31	25.8	179	179	0.0
800,000 - 899,999	21	29	-27.6	100	148	-32.4
900,000 - 999,999	14	22	-36.4	74	81	-8.6
1,000,000 - 1,249,999	20	20	0.0	81	96	-15.6
1,250,000 - 1,499,999	13	10	30.0	58	80	-27.5
1,500,000 +	30	21	42.9	114	111	2.7
TOTALS	364	392	-7.1	2014	2430	-17.1

AVERAGE & MEDIAN PRICE



DATA SOURCE: Metropolitan Regional Information Systems, Inc. (MRIS)

NOTES: Properties not listed through this Multiple Listing Service are not reflected. The term "sales" represents ratified purchase contracts. Current year information is preliminary and subject to revision. Current year-to-date contract information may not equal the sum of the monthly contract totals reported in