

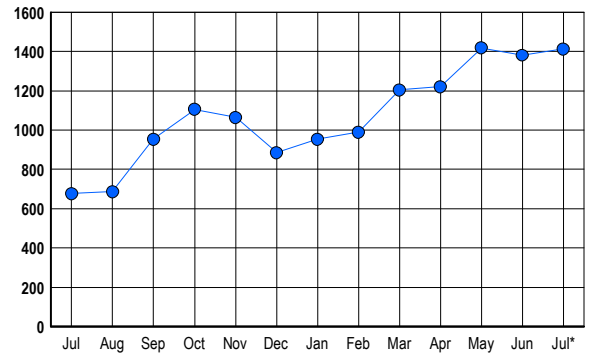


LISTINGS

Prices Range	New This Month			Total Actives		
	2006	2005	% Change	2006	2005	% Change
0 - 149,999	1	4	-75.0	0	5	-100.0
150,000 - 199,999	9	19	-52.6	14	13	7.7
200,000 - 299,999	61	58	5.2	142	45	215.6
300,000 - 399,999	93	95	-2.1	234	99	136.4
400,000 - 499,999	107	93	15.1	291	121	140.5
500,000 - 599,999	73	66	10.6	190	94	102.1
600,000 - 699,999	54	74	-27.0	140	64	118.8
700,000 - 799,999	39	43	-9.3	84	32	162.5
800,000 - 899,999	28	39	-28.2	64	49	30.6
900,000 - 999,999	33	16	106.3	63	26	142.3
1,000,000 - 1,249,999	15	16	-6.3	33	22	50.0
1,250,000 - 1,499,999	11	21	-47.6	53	30	76.7
1,500,000 +	19	23	-17.4	105	77	36.4
TOTALS	543	567	-4.2	1413	677	108.7

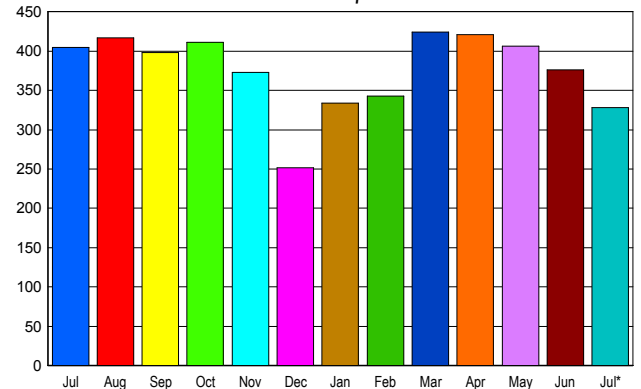
INVENTORY TREND

Listings Active at End of Month



SALES TREND

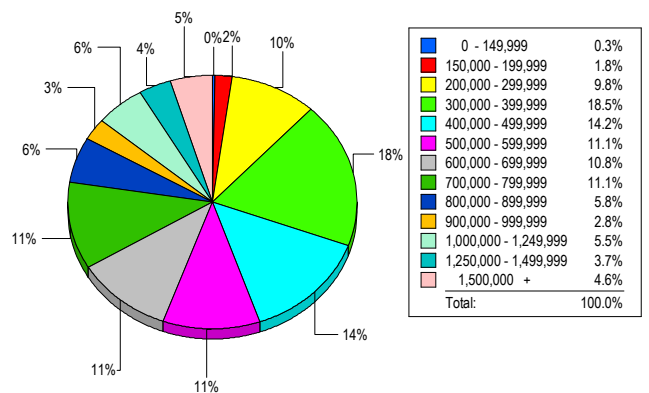
Contracts Ratified Per Month



CONTRACTS

Price Range	New This Month			Year-To-Date		
	2006	2005	% Change	2006	2005	% Change
0 - 149,999	0	7	-100.0	17	63	-73.0
150,000 - 199,999	5	21	-76.2	56	172	-67.4
200,000 - 299,999	51	52	-1.9	346	377	-8.2
300,000 - 399,999	54	77	-29.9	487	591	-17.6
400,000 - 499,999	51	74	-31.1	362	479	-24.4
500,000 - 599,999	36	28	28.6	278	289	-3.8
600,000 - 699,999	36	48	-25.0	238	300	-20.7
700,000 - 799,999	28	41	-31.7	227	266	-14.7
800,000 - 899,999	22	19	15.8	123	160	-23.1
900,000 - 999,999	10	12	-16.7	89	118	-24.6
1,000,000 - 1,249,999	14	9	55.6	92	78	17.9
1,250,000 - 1,499,999	5	8	-37.5	91	96	-5.2
1,500,000 +	16	9	77.8	151	143	5.6
TOTALS	328	405	-19.0	2557	3132	-18.4

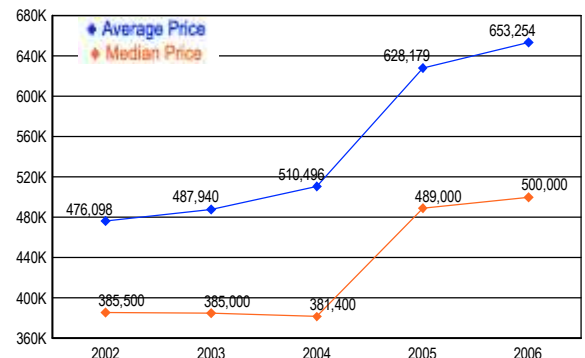
MARKET BY PRICE RANGE



SETTLEMENTS

Price Range	New This Month			Year-to-Date		
	2006	2005	% Change	2006	2005	% Change
0 - 149,999	1	5	-80.0	22	52	-57.7
150,000 - 199,999	6	11	-45.5	63	166	-62.0
200,000 - 299,999	32	46	-30.4	309	363	-14.9
300,000 - 399,999	60	55	9.1	458	505	-9.3
400,000 - 499,999	46	56	-17.9	340	443	-23.3
500,000 - 599,999	36	37	-2.7	258	270	-4.4
600,000 - 699,999	35	40	-12.5	211	237	-11.0
700,000 - 799,999	36	45	-20.0	221	228	-3.1
800,000 - 899,999	19	24	-20.8	125	180	-30.6
900,000 - 999,999	9	24	-62.5	88	110	-20.0
1,000,000 - 1,249,999	18	18	0.0	105	118	-11.0
1,250,000 - 1,499,999	12	12	0.0	73	94	-22.3
1,500,000 +	15	24	-37.5	136	137	-0.7
TOTALS	325	397	-18.1	2409	2903	-17.0

AVERAGE & MEDIAN PRICE



DATA SOURCE: Metropolitan Regional Information Systems, Inc. (MRIS)

NOTES: Properties not listed through this Multiple Listing Service are not reflected. The term "sales" represents ratified purchase contracts. Current year information is preliminary and subject to revision. Current year-to-date contract information may not equal the sum of the monthly contract totals reported in