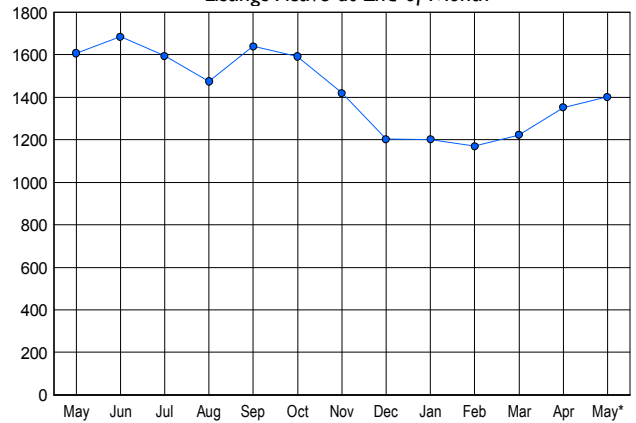


### LISTINGS

Price Range	New This Month			Total Actives		
	2007	2006	% Change	2007	2006	% Change
0 - 149,999	12	18	-33.3	38	27	40.7
150,000 - 199,999	51	48	6.3	175	95	84.2
200,000 - 299,999	146	115	27.0	286	303	-5.6
300,000 - 399,999	180	196	-8.2	294	410	-28.3
400,000 - 499,999	114	145	-21.4	228	301	-24.3
500,000 - 599,999	75	116	-35.3	151	204	-26.0
600,000 - 699,999	29	42	-31.0	68	97	-29.9
700,000 - 799,999	17	29	-41.4	47	57	-17.5
800,000 - 899,999	10	26	-61.5	36	42	-14.3
900,000 - 999,999	8	7	14.3	17	23	-26.1
1,000,000 - 1,249,999	6	6	0.0	17	14	21.4
1,250,000 - 1,499,999	7	3	133.3	17	8	112.5
1,500,000 +	12	11	9.1	27	26	3.8
<b>TOTALS</b>	<b>667</b>	<b>762</b>	<b>-12.5</b>	<b>1401</b>	<b>1607</b>	<b>-12.8</b>

### INVENTORY TREND

Listings Active at End of Month

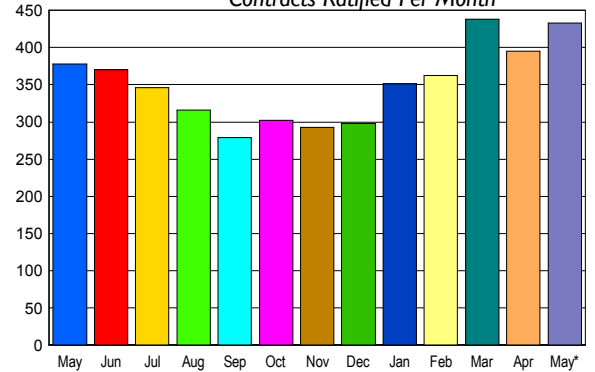


### CONTRACTS

Price Range	New This Month			Year-To-Date		
	2007	2006	% Change	2007	2006	% Change
0 - 149,999	8	8	0.0	51	40	27.5
150,000 - 199,999	41	55	-25.5	212	177	19.8
200,000 - 299,999	102	73	39.7	463	370	25.1
300,000 - 399,999	125	102	22.5	484	454	6.6
400,000 - 499,999	67	54	24.1	310	270	14.8
500,000 - 599,999	35	46	-23.9	189	175	8.0
600,000 - 699,999	22	14	57.1	97	74	31.1
700,000 - 799,999	10	10	0.0	50	46	8.7
800,000 - 899,999	7	9	-22.2	22	26	-15.4
900,000 - 999,999	4	1	300.0	19	12	58.3
1,000,000 - 1,249,999	8	1	700.0	15	9	66.7
1,250,000 - 1,499,999	2	2	0.0	12	11	9.1
1,500,000 +	2	3	-33.3	15	12	25.0
<b>TOTALS</b>	<b>433</b>	<b>378</b>	<b>14.6</b>	<b>1939</b>	<b>1676</b>	<b>15.7</b>

### SALES TREND

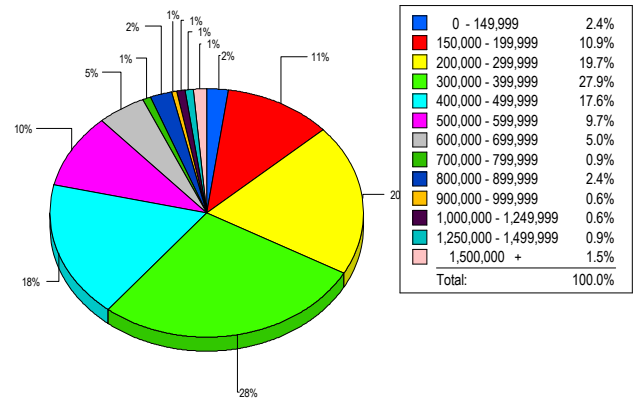
Contracts Ratified Per Month



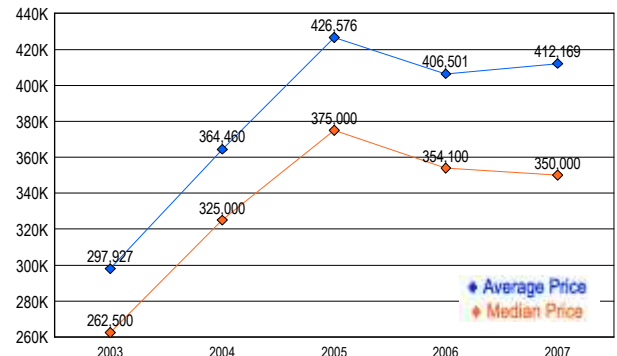
### SETTLEMENTS

Price Range	New This Month			Year-To-Date		
	2007	2006	% Change	2007	2006	% Change
0 - 149,999	8	6	33.3	38	40	-5.0
150,000 - 199,999	37	28	32.1	207	117	76.9
200,000 - 299,999	67	77	-13.0	365	307	18.9
300,000 - 399,999	95	84	13.1	401	369	8.7
400,000 - 499,999	60	52	15.4	253	249	1.6
500,000 - 599,999	33	31	6.5	166	164	1.2
600,000 - 699,999	17	15	13.3	89	61	45.9
700,000 - 799,999	3	10	-70.0	46	34	35.3
800,000 - 899,999	8	6	33.3	29	20	45.0
900,000 - 999,999	2	2	0.0	15	9	66.7
1,000,000 - 1,249,999	2	2	0.0	8	11	-27.3
1,250,000 - 1,499,999	3	3	0.0	15	9	66.7
1,500,000 +	5	3	66.7	18	15	20.0
<b>TOTALS</b>	<b>340</b>	<b>319</b>	<b>6.6</b>	<b>1650</b>	<b>1405</b>	<b>17.4</b>

### MARKET BY PRICE RANGE



### AVERAGE & MEDIAN PRICE



DATA SOURCE: Metropolitan Regional Information Systems, Inc. (MRIS)

NOTES: Properties not listed through this Multiple Listing Service are not reflected. The term "sales" represents ratified purchase contracts. Current year information is preliminary and subject to revision. Current year-to-date contract information may not equal the sum of the monthly contract totals reported in