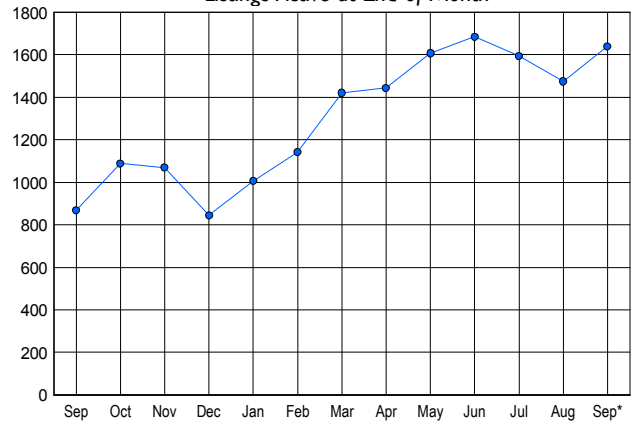


### LISTINGS

Price Range	New This Month			Total Actives		
	2006	2005	% Change	2006	2005	% Change
0 - 149,999	10	17	-41.2	33	25	32.0
150,000 - 199,999	68	36	88.9	199	45	342.2
200,000 - 299,999	150	143	4.9	346	124	179.0
300,000 - 399,999	188	200	-6.0	381	197	93.4
400,000 - 499,999	130	140	-7.1	273	151	80.8
500,000 - 599,999	82	108	-24.1	176	123	43.1
600,000 - 699,999	40	66	-39.4	83	73	13.7
700,000 - 799,999	27	26	3.8	41	36	13.9
800,000 - 899,999	20	12	66.7	33	22	50.0
900,000 - 999,999	10	9	11.1	18	17	5.9
1,000,000 - 1,249,999	7	7	0.0	13	8	62.5
1,250,000 - 1,499,999	2	3	-33.3	15	11	36.4
1,500,000 +	7	7	0.0	28	37	-24.3
<b>TOTALS</b>	<b>741</b>	<b>774</b>	<b>-4.3</b>	<b>1639</b>	<b>869</b>	<b>88.6</b>

### INVENTORY TREND

Listings Active at End of Month

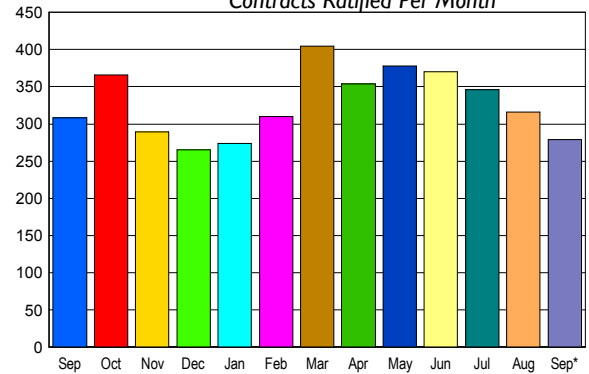


### CONTRACTS

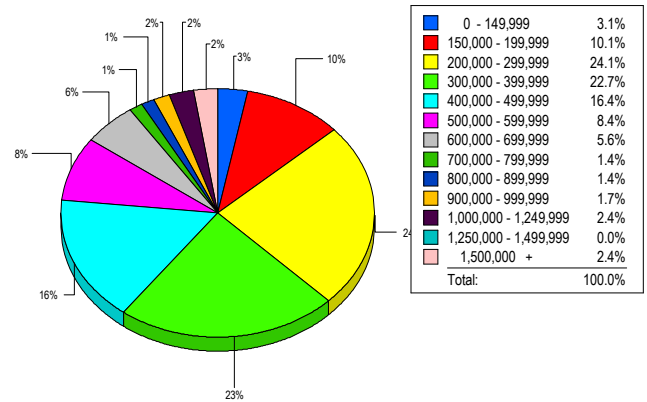
Price Range	New This Month			Year-To-Date		
	2006	2005	% Change	2006	2005	% Change
0 - 149,999	7	13	-46.2	73	133	-45.1
150,000 - 199,999	27	20	35.0	321	235	36.6
200,000 - 299,999	73	76	-3.9	678	756	-10.3
300,000 - 399,999	65	70	-7.1	766	848	-9.7
400,000 - 499,999	45	58	-22.4	454	613	-25.9
500,000 - 599,999	23	25	-8.0	289	370	-21.9
600,000 - 699,999	13	27	-51.9	135	179	-24.6
700,000 - 799,999	8	7	14.3	72	75	-4.0
800,000 - 899,999	6	2	200.0	40	32	25.0
900,000 - 999,999	5	1	400.0	26	15	73.3
1,000,000 - 1,249,999	2	4	-50.0	22	32	-31.3
1,250,000 - 1,499,999	2	1	100.0	16	16	0.0
1,500,000 +	3	4	-25.0	25	36	-30.6
<b>TOTALS</b>	<b>279</b>	<b>308</b>	<b>-9.4</b>	<b>2917</b>	<b>3340</b>	<b>-12.7</b>

### SALES TREND

Contracts Ratified Per Month



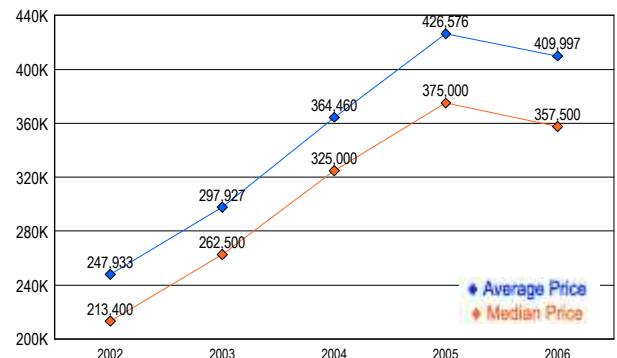
### MARKET BY PRICE RANGE



### SETTLEMENTS

Price Range	New This Month			Year-To-Date		
	2006	2005	% Change	2006	2005	% Change
0 - 149,999	9	5	80.0	69	140	-50.7
150,000 - 199,999	29	16	81.3	266	168	58.3
200,000 - 299,999	69	71	-2.8	628	656	-4.3
300,000 - 399,999	65	71	-8.5	738	836	-11.7
400,000 - 499,999	47	60	-21.7	457	634	-27.9
500,000 - 599,999	24	21	14.3	318	357	-10.9
600,000 - 699,999	16	25	-36.0	132	201	-34.3
700,000 - 799,999	4	6	-33.3	73	84	-13.1
800,000 - 899,999	4	4	0.0	34	33	3.0
900,000 - 999,999	5	3	66.7	22	17	29.4
1,000,000 - 1,249,999	7	1	600.0	27	24	12.5
1,250,000 - 1,499,999	0	0	0.0	12	18	-33.3
1,500,000 +	7	1	600.0	30	30	0.0
<b>TOTALS</b>	<b>286</b>	<b>284</b>	<b>0.7</b>	<b>2806</b>	<b>3198</b>	<b>-12.3</b>

### AVERAGE & MEDIAN PRICE



DATA SOURCE: Metropolitan Regional Information Systems, Inc. (MRIS)

NOTES: Properties not listed through this Multiple Listing Service are not reflected. The term "sales" represents ratified purchase contracts. Current year information is preliminary and subject to revision. Current year-to-date contract information may not equal the sum of the monthly contract totals reported in