

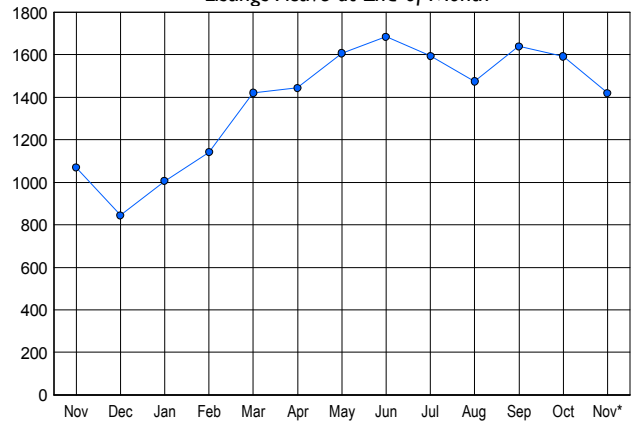


### LISTINGS

Price Range	New This Month			Total Actives		
	2006	2005	% Change	2006	2005	% Change
0 - 149,999	14	13	7.7	33	32	3.1
150,000 - 199,999	36	20	80.0	205	40	412.5
200,000 - 299,999	72	109	-33.9	297	168	76.8
300,000 - 399,999	92	135	-31.9	314	260	20.8
400,000 - 499,999	64	103	-37.9	221	200	10.5
500,000 - 599,999	43	74	-41.9	141	157	-10.2
600,000 - 699,999	16	34	-52.9	65	77	-15.6
700,000 - 799,999	13	14	-7.1	49	35	40.0
800,000 - 899,999	5	12	-58.3	26	29	-10.3
900,000 - 999,999	5	6	-16.7	13	17	-23.5
1,000,000 - 1,249,999	2	4	-50.0	9	14	-35.7
1,250,000 - 1,499,999	6	5	20.0	14	14	0.0
1,500,000 +	5	2	150.0	32	26	23.1
<b>TOTALS</b>	<b>373</b>	<b>531</b>	<b>-29.8</b>	<b>1419</b>	<b>1069</b>	<b>32.7</b>

### INVENTORY TREND

Listings Active at End of Month

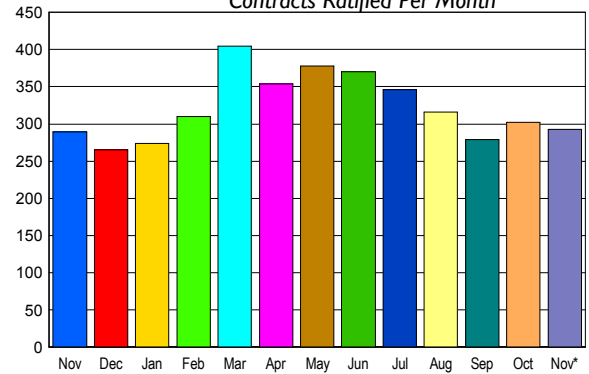


### CONTRACTS

Price Range	New This Month			Year-To-Date		
	2006	2005	% Change	2006	2005	% Change
0 - 149,999	6	14	-57.1	84	155	-45.8
150,000 - 199,999	40	22	81.8	402	278	44.6
200,000 - 299,999	64	70	-8.6	794	889	-10.7
300,000 - 399,999	76	78	-2.6	914	1,014	-9.9
400,000 - 499,999	41	47	-12.8	550	716	-23.2
500,000 - 599,999	33	20	65.0	340	423	-19.6
600,000 - 699,999	15	17	-11.8	159	215	-26.0
700,000 - 799,999	7	11	-36.4	95	92	3.3
800,000 - 899,999	4	5	-20.0	51	44	15.9
900,000 - 999,999	2	3	-33.3	31	26	19.2
1,000,000 - 1,249,999	2	0	200.0	27	36	-25.0
1,250,000 - 1,499,999	1	1	0.0	21	19	10.5
1,500,000 +	2	1	100.0	29	45	-35.6
<b>TOTALS</b>	<b>293</b>	<b>289</b>	<b>1.4</b>	<b>3497</b>	<b>3952</b>	<b>-11.5</b>

### SALES TREND

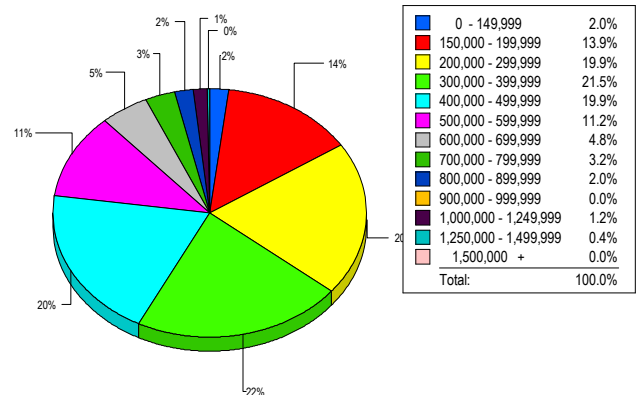
Contracts Ratified Per Month



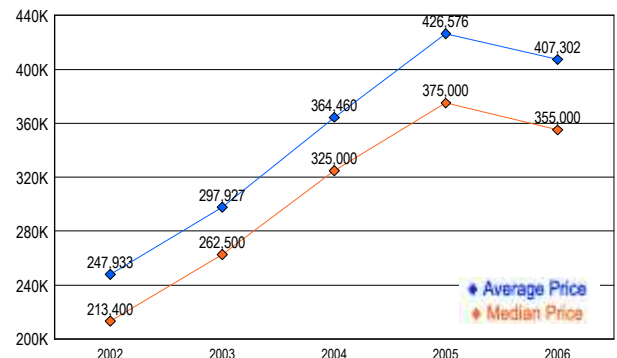
### SETTLEMENTS

Price Range	New This Month			Year-To-Date		
	2006	2005	% Change	2006	2005	% Change
0 - 149,999	5	7	-28.6	84	158	-46.8
150,000 - 199,999	35	10	250.0	333	191	74.3
200,000 - 299,999	50	43	16.3	744	757	-1.7
300,000 - 399,999	54	78	-30.8	859	1,000	-14.1
400,000 - 499,999	50	46	8.7	545	751	-27.4
500,000 - 599,999	28	25	12.0	366	415	-11.8
600,000 - 699,999	12	16	-25.0	155	238	-34.9
700,000 - 799,999	8	6	33.3	90	99	-9.1
800,000 - 899,999	5	5	0.0	46	41	12.2
900,000 - 999,999	0	9	-100.0	24	29	-17.2
1,000,000 - 1,249,999	3	7	-57.1	33	35	-5.7
1,250,000 - 1,499,999	1	0	100.0	15	19	-21.1
1,500,000 +	0	4	-100.0	31	39	-20.5
<b>TOTALS</b>	<b>251</b>	<b>256</b>	<b>-2.0</b>	<b>3325</b>	<b>3772</b>	<b>-11.9</b>

### MARKET BY PRICE RANGE



### AVERAGE & MEDIAN PRICE



DATA SOURCE: Metropolitan Regional Information Systems, Inc. (MRIS)

NOTES: Properties not listed through this Multiple Listing Service are not reflected. The term "sales" represents ratified purchase contracts. Current year information is preliminary and subject to revision. Current year- to- date contract information may not equal the sum of the monthly contract totals reported in