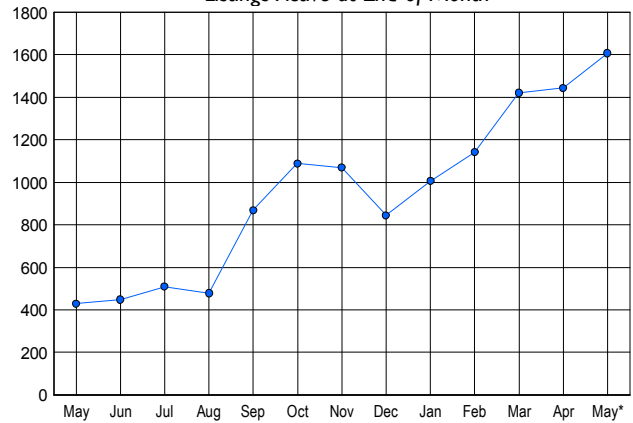


### LISTINGS

Price Range	New This Month			Total Actives		
	2006	2005	% Change	2006	2005	% Change
0 - 149,999	18	16	12.5	27	16	68.8
150,000 - 199,999	48	23	108.7	95	15	533.3
200,000 - 299,999	115	86	33.7	303	43	604.7
300,000 - 399,999	196	154	27.3	410	93	340.9
400,000 - 499,999	145	125	16.0	301	94	220.2
500,000 - 599,999	116	85	36.5	204	57	257.9
600,000 - 699,999	42	33	27.3	97	30	223.3
700,000 - 799,999	29	18	61.1	57	18	216.7
800,000 - 899,999	26	11	136.4	42	14	200.0
900,000 - 999,999	7	5	40.0	23	5	360.0
1,000,000 - 1,249,999	6	5	20.0	14	10	40.0
1,250,000 - 1,499,999	3	1	200.0	8	3	166.7
1,500,000 +	11	4	175.0	26	31	-16.1
<b>TOTALS</b>	<b>762</b>	<b>566</b>	<b>34.6</b>	<b>1607</b>	<b>429</b>	<b>274.6</b>

### INVENTORY TREND

Listings Active at End of Month

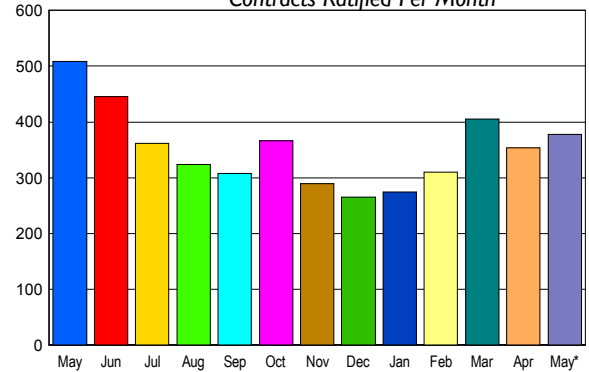


### CONTRACTS

Price Range	New This Month			Year-To-Date		
	2006	2005	% Change	2006	2005	% Change
0 - 149,999	8	19	-57.9	40	96	-58.3
150,000 - 199,999	55	24	129.2	177	131	35.1
200,000 - 299,999	73	105	-30.5	370	432	-14.4
300,000 - 399,999	102	134	-23.9	454	502	-9.6
400,000 - 499,999	54	92	-41.3	270	361	-25.2
500,000 - 599,999	46	70	-34.3	175	226	-22.6
600,000 - 699,999	14	25	-44.0	74	98	-24.5
700,000 - 799,999	10	17	-41.2	46	48	-4.2
800,000 - 899,999	9	7	28.6	26	24	8.3
900,000 - 999,999	1	4	-75.0	12	10	20.0
1,000,000 - 1,249,999	1	4	-75.0	9	23	-60.9
1,250,000 - 1,499,999	2	3	-33.3	11	11	0.0
1,500,000 +	3	4	-25.0	12	28	-57.1
<b>TOTALS</b>	<b>378</b>	<b>508</b>	<b>-25.6</b>	<b>1676</b>	<b>1990</b>	<b>-15.8</b>

### SALES TREND

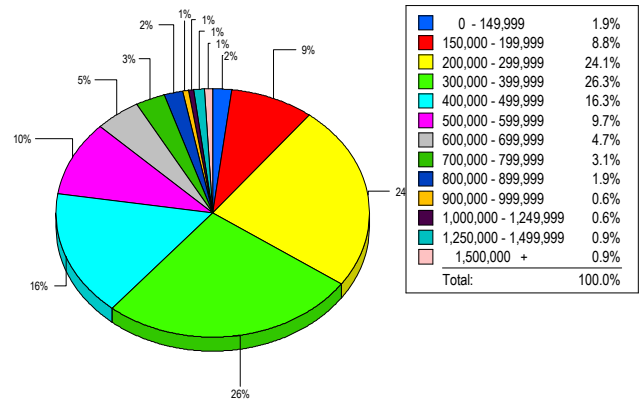
Contracts Ratified Per Month



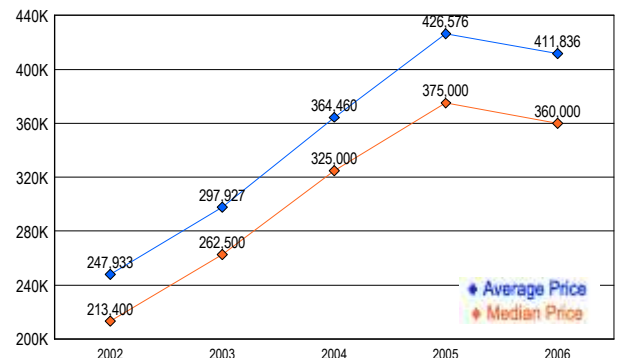
### SETTLEMENTS

Price Range	New This Month			Year-To-Date		
	2006	2005	% Change	2006	2005	% Change
0 - 149,999	6	15	-60.0	40	95	-57.9
150,000 - 199,999	28	24	16.7	117	100	17.0
200,000 - 299,999	77	86	-10.5	307	322	-4.7
300,000 - 399,999	84	78	7.7	369	378	-2.4
400,000 - 499,999	52	71	-26.8	249	305	-18.4
500,000 - 599,999	31	32	-3.1	164	154	6.5
600,000 - 699,999	15	24	-37.5	61	88	-30.7
700,000 - 799,999	10	9	11.1	34	36	-5.6
800,000 - 899,999	6	2	200.0	20	15	33.3
900,000 - 999,999	2	2	0.0	9	8	12.5
1,000,000 - 1,249,999	2	1	100.0	11	15	-26.7
1,250,000 - 1,499,999	3	3	0.0	9	10	-10.0
1,500,000 +	3	9	-66.7	15	21	-28.6
<b>TOTALS</b>	<b>319</b>	<b>356</b>	<b>-10.4</b>	<b>1405</b>	<b>1547</b>	<b>-9.2</b>

### MARKET BY PRICE RANGE



### AVERAGE & MEDIAN PRICE



DATA SOURCE: Metropolitan Regional Information Systems, Inc. (MRIS)

NOTES: Properties not listed through this Multiple Listing Service are not reflected. The term "sales" represents ratified purchase contracts. Current year information is preliminary and subject to revision. Current year-to-date contract information may not equal the sum of the monthly contract totals reported in