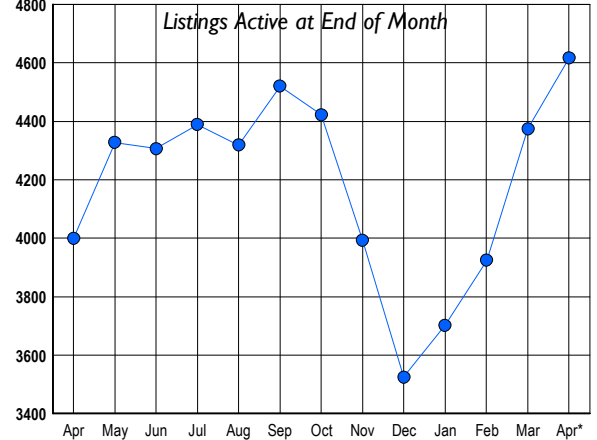




LISTINGS

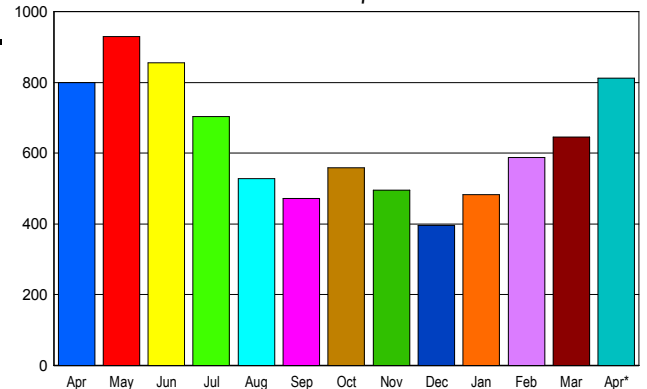
Prices Range	New This Month			Total Actives		
	2008	2007	% Change	2008	2007	% Change
0 - 149,999	0	0	0.0	9	4	125.0
150,000 - 199,999	26	2	1,200.0	70	4	1,650.0
200,000 - 299,999	184	81	127.2	610	174	250.6
300,000 - 399,999	354	355	-0.3	1,072	674	59.1
400,000 - 499,999	265	454	-41.6	834	997	-16.3
500,000 - 599,999	205	306	-33.0	508	662	-23.3
600,000 - 699,999	155	189	-18.0	364	373	-2.4
700,000 - 799,999	123	121	1.7	274	259	5.8
800,000 - 899,999	88	90	-2.2	185	158	17.1
900,000 - 999,999	48	65	-26.2	105	134	-21.6
1,000,000 - 1,249,999	65	69	-5.8	151	152	-0.7
1,250,000 - 1,499,999	57	52	9.6	144	128	12.5
1,500,000 +	83	104	-20.2	292	280	4.3
TOTALS	1653	1888	-12.4	4618	3999	15.5

INVENTORY TREND



SALES TREND

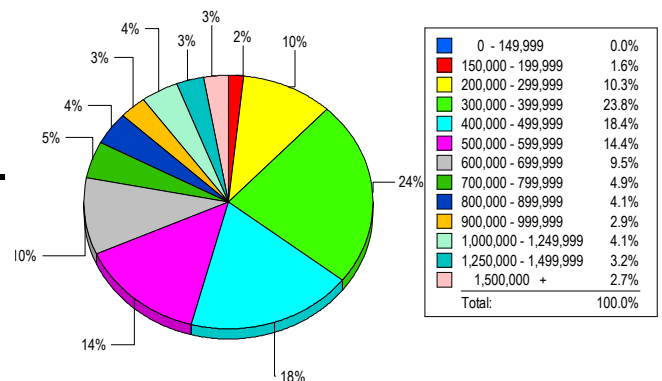
Contracts Ratified Per Month



CONTRACTS

Price Range	New This Month			Year-To-Date		
	2008	2007	% Change	2008	2007	% Change
0 - 149,999	0	0	0.0	1	1	0.0
150,000 - 199,999	24	1	2,300.0	41	5	720.0
200,000 - 299,999	113	41	175.6	309	158	95.6
300,000 - 399,999	188	158	19.0	566	650	-12.9
400,000 - 499,999	136	161	-15.5	445	693	-35.8
500,000 - 599,999	88	110	-20.0	293	441	-33.6
600,000 - 699,999	79	90	-12.2	210	358	-41.3
700,000 - 799,999	51	64	-20.3	158	234	-32.5
800,000 - 899,999	32	53	-39.6	103	156	-34.0
900,000 - 999,999	21	25	-16.0	63	83	-24.1
1,000,000 - 1,249,999	25	27	-7.4	79	104	-24.0
1,250,000 - 1,499,999	26	27	-3.7	74	92	-19.6
1,500,000 +	30	42	-28.6	84	125	-32.8
TOTALS	813	799	1.8	2426	3100	-21.7

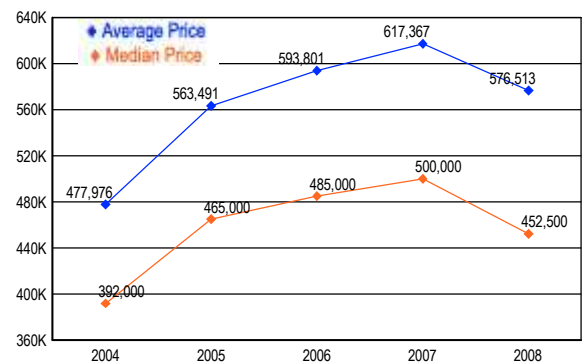
MARKET BY PRICE RANGE



SETTLEMENTS

Price Range	New This Month			Year-to-Date		
	2008	2007	% Change	2008	2007	% Change
0 - 149,999	0	1	-100.0	1	1	0.0
150,000 - 199,999	9	0	900.0	20	4	400.0
200,000 - 299,999	57	25	128.0	196	120	63.3
300,000 - 399,999	132	141	-6.4	450	600	-25.0
400,000 - 499,999	102	166	-38.6	324	622	-47.9
500,000 - 599,999	80	85	-5.9	214	385	-44.4
600,000 - 699,999	53	84	-36.9	160	288	-44.4
700,000 - 799,999	27	53	-49.1	86	172	-50.0
800,000 - 899,999	23	27	-14.8	71	104	-31.7
900,000 - 999,999	16	16	0.0	44	67	-34.3
1,000,000 - 1,249,999	23	22	4.5	57	81	-29.6
1,250,000 - 1,499,999	18	20	-10.0	51	58	-12.1
1,500,000 +	15	15	0.0	62	82	-24.4
TOTALS	555	655	-15.3	1736	2584	-32.8

AVERAGE & MEDIAN PRICE



DATA SOURCE: Metropolitan Regional Information Systems, Inc. (MRIS)

NOTES: Properties not listed through this Multiple Listing Service are not reflected. The term "sales" represents ratified purchase contracts. Current year information is preliminary and subject to revision. Current year-to-date contract information may not equal the sum of the monthly contract totals reported in