

MONTGOMERY COUNTY Residential Market Report



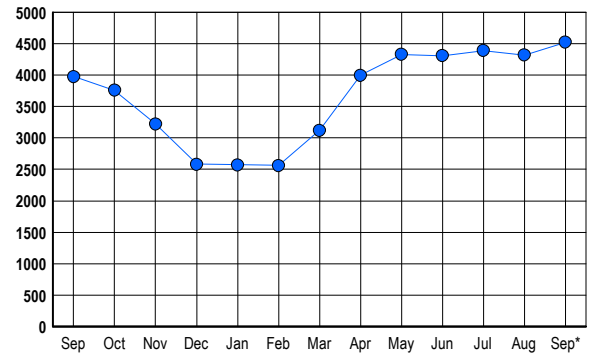
HOUSING REPORT Single Family Homes September 2007

LISTINGS

Prices Range	New This Month			Total Actives		
	2007	2006	% Change	2007	2006	% Change
0 - 149,999	2	1	100.0	7	0	700.0
150,000 - 199,999	3	1	200.0	5	2	150.0
200,000 - 299,999	76	62	22.6	341	160	113.1
300,000 - 399,999	289	312	-7.4	1,002	646	55.1
400,000 - 499,999	319	398	-19.8	1,095	867	26.3
500,000 - 599,999	208	262	-20.6	629	662	-5.0
600,000 - 699,999	149	197	-24.4	391	474	-17.5
700,000 - 799,999	88	117	-24.8	250	274	-8.8
800,000 - 899,999	62	102	-39.2	182	213	-14.6
900,000 - 999,999	40	43	-7.0	94	126	-25.4
1,000,000 - 1,249,999	47	66	-28.8	117	151	-22.5
1,250,000 - 1,499,999	65	62	4.8	149	145	2.8
1,500,000 +	75	98	-23.5	258	255	1.2
TOTALS	1423	1721	-17.3	4520	3975	13.7

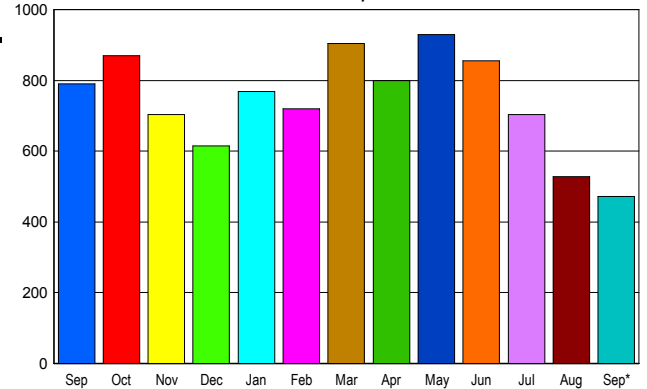
INVENTORY TREND

Listings Active at End of Month



SALES TREND

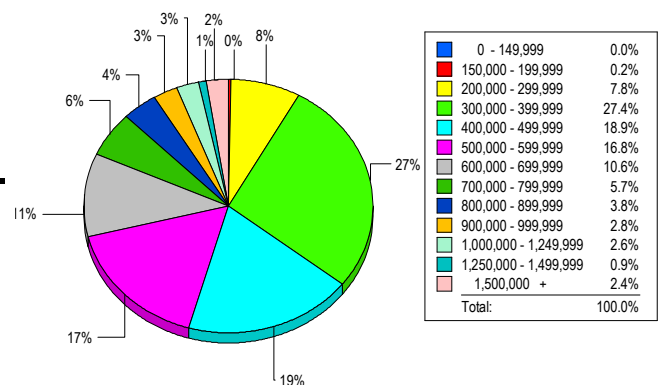
Contracts Ratified Per Month



CONTRACTS

Price Range	New This Month			Year-To-Date		
	2007	2006	% Change	2007	2006	% Change
0 - 149,999	1	0	100.0	3	0	300.0
150,000 - 199,999	1	0	100.0	8	3	166.7
200,000 - 299,999	35	41	-14.6	344	409	-15.9
300,000 - 399,999	123	201	-38.8	1,357	1,937	-29.9
400,000 - 499,999	93	210	-55.7	1,387	1,931	-28.2
500,000 - 599,999	71	109	-34.9	951	1,218	-21.9
600,000 - 699,999	53	79	-32.9	708	872	-18.8
700,000 - 799,999	31	37	-16.2	479	551	-13.1
800,000 - 899,999	21	28	-25.0	309	344	-10.2
900,000 - 999,999	9	18	-50.0	189	220	-14.1
1,000,000 - 1,249,999	9	22	-59.1	210	216	-2.8
1,250,000 - 1,499,999	13	18	-27.8	207	228	-9.2
1,500,000 +	13	28	-53.6	242	259	-6.6
TOTALS	473	791	-40.2	6394	8188	-21.9

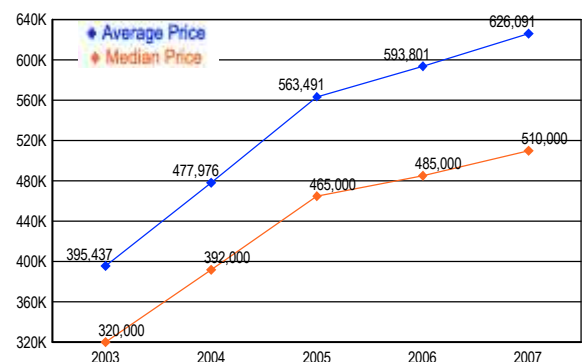
MARKET BY PRICE RANGE



SETTLEMENTS

Price Range	New This Month			Year-to-Date		
	2007	2006	% Change	2007	2006	% Change
0 - 149,999	0	0	0.0	2	0	200.0
150,000 - 199,999	1	0	100.0	10	2	400.0
200,000 - 299,999	33	34	-2.9	317	358	-11.5
300,000 - 399,999	116	180	-35.6	1,356	1,884	-28.0
400,000 - 499,999	80	184	-56.5	1,410	1,921	-26.6
500,000 - 599,999	71	121	-41.3	968	1,189	-18.6
600,000 - 699,999	45	72	-37.5	700	841	-16.8
700,000 - 799,999	24	41	-41.5	462	554	-16.6
800,000 - 899,999	16	31	-48.4	303	342	-11.4
900,000 - 999,999	12	17	-29.4	207	203	2.0
1,000,000 - 1,249,999	11	20	-45.0	243	246	-1.2
1,250,000 - 1,499,999	4	7	-42.9	165	189	-12.7
1,500,000 +	10	25	-60.0	248	254	-2.4
TOTALS	423	732	-42.2	6391	7983	-19.9

AVERAGE & MEDIAN PRICE



DATA SOURCE: Metropolitan Regional Information Systems, Inc. (MRIS)

NOTES: Properties not listed through this Multiple Listing Service are not reflected. The term "sales" represents ratified purchase contracts. Current year information is preliminary and subject to revision. Current year-to-date contract information may not equal the sum of the monthly contract totals reported in