

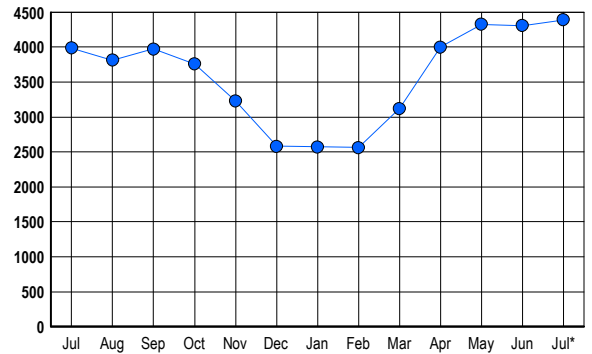


LISTINGS

Prices Range	New This Month			Total Actives		
	2007	2006	% Change	2007	2006	% Change
0 - 149,999	0	3	-100.0	4	2	100.0
150,000 - 199,999	0	1	-100.0	2	1	100.0
200,000 - 299,999	85	86	-1.2	253	156	62.2
300,000 - 399,999	337	363	-7.2	949	656	44.7
400,000 - 499,999	369	391	-5.6	1,147	842	36.2
500,000 - 599,999	204	307	-33.6	640	685	-6.6
600,000 - 699,999	132	176	-25.0	383	475	-19.4
700,000 - 799,999	82	131	-37.4	240	312	-23.1
800,000 - 899,999	65	72	-9.7	173	183	-5.5
900,000 - 999,999	30	51	-41.2	107	133	-19.5
1,000,000 - 1,249,999	25	52	-51.9	114	143	-20.3
1,250,000 - 1,499,999	40	37	8.1	130	131	-0.8
1,500,000 +	40	51	-21.6	247	269	-8.2
TOTALS	1409	1721	-18.1	4389	3988	10.1

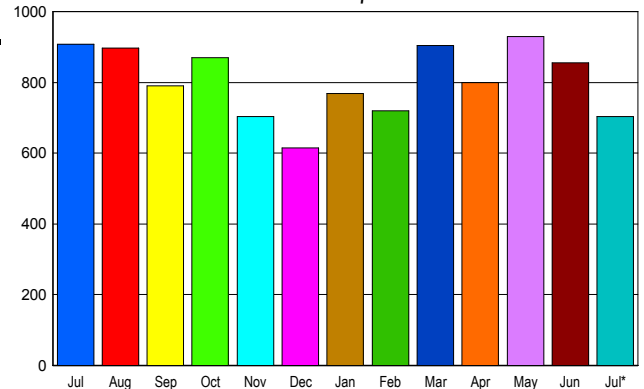
INVENTORY TREND

Listings Active at End of Month



SALES TREND

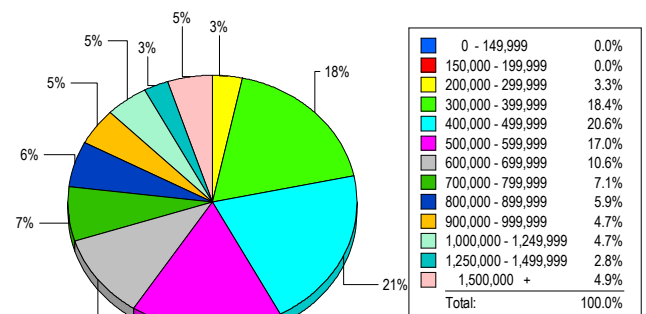
Contracts Ratified Per Month



CONTRACTS

Price Range	New This Month			Year-To-Date		
	2007	2006	% Change	2007	2006	% Change
0 - 149,999	1	0	100.0	2	0	200.0
150,000 - 199,999	0	1	-100.0	5	3	66.7
200,000 - 299,999	38	43	-11.6	280	322	-13.0
300,000 - 399,999	161	196	-17.9	1,113	1,506	-26.1
400,000 - 499,999	137	243	-43.6	1,197	1,517	-21.1
500,000 - 599,999	114	138	-17.4	811	985	-17.7
600,000 - 699,999	80	94	-14.9	610	714	-14.6
700,000 - 799,999	47	62	-24.2	414	459	-9.8
800,000 - 899,999	35	40	-12.5	277	293	-5.5
900,000 - 999,999	19	13	46.2	163	182	-10.4
1,000,000 - 1,249,999	25	25	0.0	187	172	8.7
1,250,000 - 1,499,999	27	30	-10.0	173	200	-13.5
1,500,000 +	20	24	-16.7	216	205	5.4
TOTALS	704	909	-22.6	5448	6558	-16.9

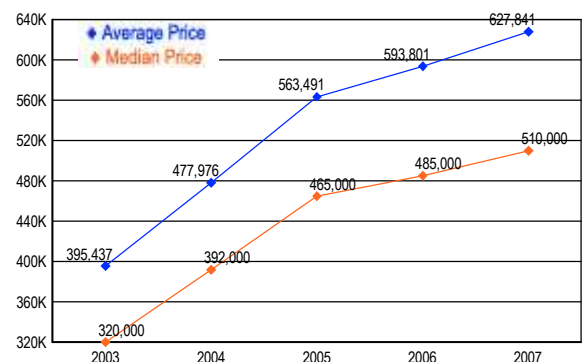
MARKET BY PRICE RANGE



SETTLEMENTS

Price Range	New This Month			Year-to-Date		
	2007	2006	% Change	2007	2006	% Change
0 - 149,999	0	0	0.0	1	0	100.0
150,000 - 199,999	0	0	0.0	7	1	600.0
200,000 - 299,999	26	39	-33.3	251	278	-9.7
300,000 - 399,999	145	179	-19.0	1,066	1,454	-26.7
400,000 - 499,999	163	221	-26.2	1,167	1,457	-19.9
500,000 - 599,999	134	138	-2.9	773	890	-13.1
600,000 - 699,999	84	114	-26.3	564	651	-13.4
700,000 - 799,999	56	62	-9.7	368	438	-16.0
800,000 - 899,999	47	31	51.6	254	259	-1.9
900,000 - 999,999	37	28	32.1	165	162	1.9
1,000,000 - 1,249,999	37	36	2.8	189	183	3.3
1,250,000 - 1,499,999	22	25	-12.0	129	150	-14.0
1,500,000 +	39	30	30.0	207	194	6.7
TOTALS	790	903	-12.5	5141	6117	-16.0

AVERAGE & MEDIAN PRICE



DATA SOURCE: Metropolitan Regional Information Systems, Inc. (MRIS)

NOTES: Properties not listed through this Multiple Listing Service are not reflected. The term "sales" represents ratified purchase contracts. Current year information is preliminary and subject to revision. Current year- to- date contract information may not equal the sum of the monthly contract totals reported in