

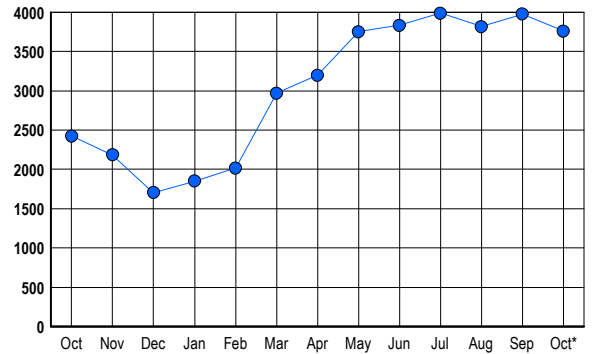


LISTINGS

Prices Range	New This Month			Total Actives		
	2006	2005	% Change	2006	2005	% Change
0 - 149,999	0	8	-100.0	0	16	-100.0
150,000 - 199,999	3	3	0.0	2	5	-60.0
200,000 - 299,999	71	106	-33.0	148	104	42.3
300,000 - 399,999	276	335	-17.6	616	393	56.7
400,000 - 499,999	322	366	-12.0	813	444	83.1
500,000 - 599,999	240	252	-4.8	643	356	80.6
600,000 - 699,999	143	192	-25.5	429	292	46.9
700,000 - 799,999	64	114	-43.9	242	184	31.5
800,000 - 899,999	65	76	-14.5	196	115	70.4
900,000 - 999,999	38	37	2.7	120	66	81.8
1,000,000 - 1,249,999	46	56	-17.9	145	91	59.3
1,250,000 - 1,499,999	51	53	-3.8	148	123	20.3
1,500,000 +	68	71	-4.2	256	237	8.0
TOTALS	1387	1669	-16.9	3758	2426	54.9

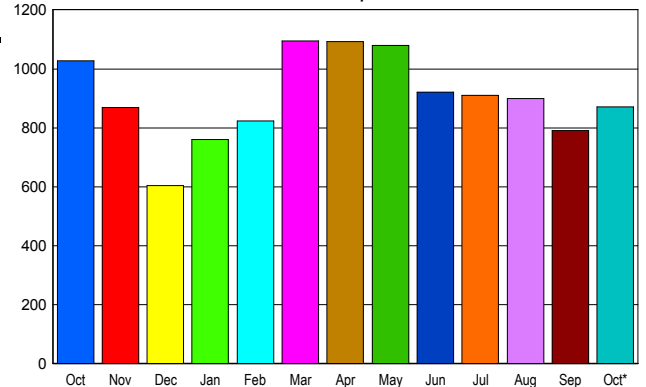
INVENTORY TREND

Listings Active at End of Month



SALES TREND

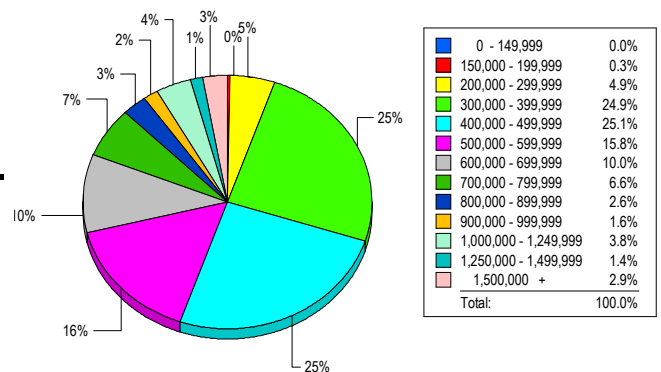
Contracts Ratified Per Month



CONTRACTS

Price Range	New This Month			Year-To-Date		
	2006	2005	% Change	2006	2005	% Change
0 - 149,999	0	0	0.0	0	5	-100.0
150,000 - 199,999	3	1	200.0	6	23	-73.9
200,000 - 299,999	57	81	-29.6	465	1,101	-57.8
300,000 - 399,999	198	250	-20.8	2,123	2,947	-28.0
400,000 - 499,999	234	241	-2.9	2,154	2,640	-18.4
500,000 - 599,999	114	141	-19.1	1,328	1,436	-7.5
600,000 - 699,999	85	98	-13.3	952	1,157	-17.7
700,000 - 799,999	50	78	-35.9	601	780	-22.9
800,000 - 899,999	42	35	20.0	386	478	-19.2
900,000 - 999,999	16	29	-44.8	235	276	-14.9
1,000,000 - 1,249,999	31	27	14.8	250	288	-13.2
1,250,000 - 1,499,999	17	23	-26.1	245	237	3.4
1,500,000 +	24	24	0.0	284	260	9.2
TOTALS	871	1028	-15.3	9029	11628	-22.4

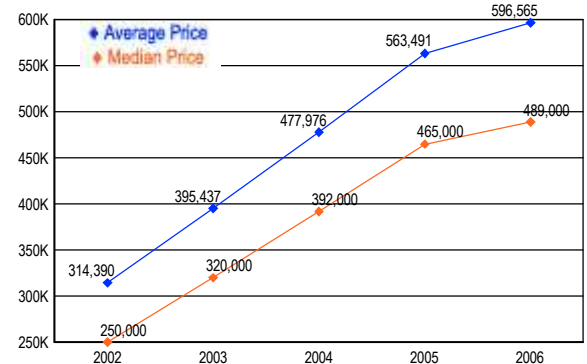
MARKET BY PRICE RANGE



SETTLEMENTS

Price Range	New This Month			Year-to-Date		
	2006	2005	% Change	2006	2005	% Change
0 - 149,999	0	0	0.0	0	5	-100.0
150,000 - 199,999	2	0	200.0	4	21	-81.0
200,000 - 299,999	36	67	-46.3	400	1,002	-60.1
300,000 - 399,999	181	249	-27.3	2,077	2,767	-24.9
400,000 - 499,999	183	257	-28.8	2,117	2,614	-19.0
500,000 - 599,999	115	144	-20.1	1,311	1,455	-9.9
600,000 - 699,999	73	102	-28.4	918	1,143	-19.7
700,000 - 799,999	48	62	-22.6	607	735	-17.4
800,000 - 899,999	19	29	-34.5	362	459	-21.1
900,000 - 999,999	12	21	-42.9	216	285	-24.2
1,000,000 - 1,249,999	28	21	33.3	276	335	-17.6
1,250,000 - 1,499,999	10	19	-47.4	199	215	-7.4
1,500,000 +	21	16	31.3	276	246	12.2
TOTALS	728	987	-26.2	8763	11282	-22.3

AVERAGE & MEDIAN PRICE



DATA SOURCE: Metropolitan Regional Information Systems, Inc. (MRIS)

NOTES: Properties not listed through this Multiple Listing Service are not reflected. The term "sales" represents ratified purchase contracts. Current year information is preliminary and subject to revision. Current year-to-date contract information may not equal the sum of the monthly contract totals reported in