

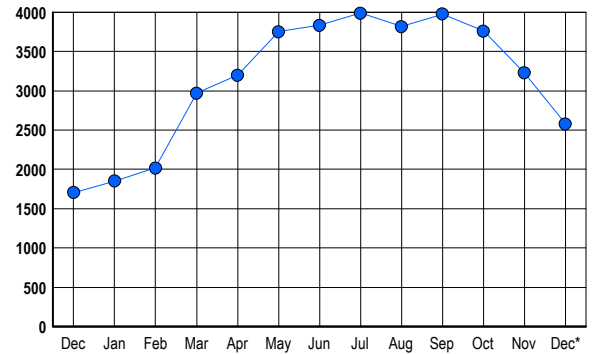


## LISTINGS

Prices Range	New This Month			Total Actives		
	2006	2005	% Change	2006	2005	% Change
0 - 149,999	0	4	-100.0	2	15	-86.7
150,000 - 199,999	1	0	100.0	0	3	-100.0
200,000 - 299,999	48	42	14.3	119	82	45.1
300,000 - 399,999	121	156	-22.4	415	267	55.4
400,000 - 499,999	140	140	0.0	568	295	92.5
500,000 - 599,999	101	118	-14.4	424	296	43.2
600,000 - 699,999	52	59	-11.9	266	183	45.4
700,000 - 799,999	37	44	-15.9	185	119	55.5
800,000 - 899,999	25	18	38.9	125	83	50.6
900,000 - 999,999	8	20	-60.0	75	52	44.2
1,000,000 - 1,249,999	13	15	-13.3	97	70	38.6
1,250,000 - 1,499,999	18	10	80.0	104	75	38.7
1,500,000 +	23	14	64.3	201	163	23.3
<b>TOTALS</b>	<b>587</b>	<b>640</b>	<b>-8.3</b>	<b>2581</b>	<b>1703</b>	<b>51.6</b>

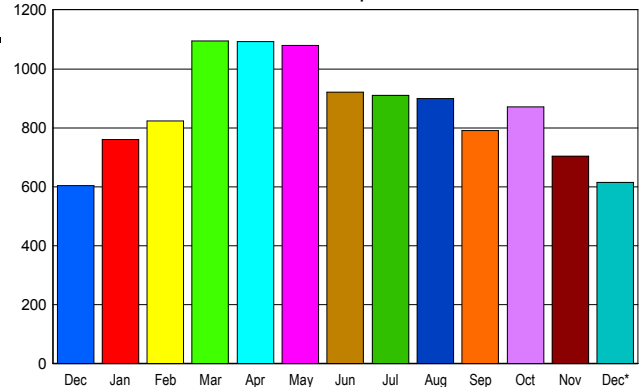
## INVENTORY TREND

Listings Active at End of Month



## SALES TREND

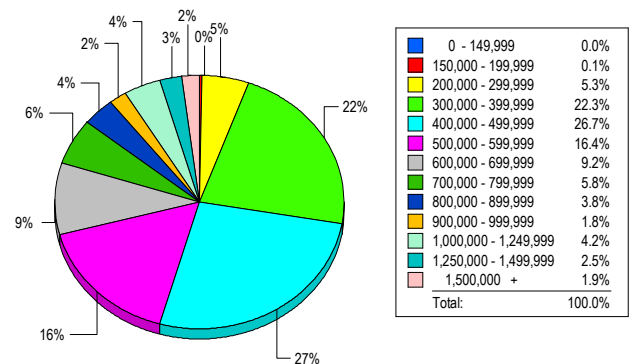
Contracts Ratified Per Month



## CONTRACTS

Price Range	New This Month			Year-To-Date		
	2006	2005	% Change	2006	2005	% Change
0 - 149,999	0	0	0.0	0	6	-100.0
150,000 - 199,999	1	0	100.0	9	25	-64.0
200,000 - 299,999	31	42	-26.2	541	1,197	-54.8
300,000 - 399,999	151	179	-15.6	2,442	3,366	-27.5
400,000 - 499,999	150	154	-2.6	2,454	3,002	-18.3
500,000 - 599,999	99	73	35.6	1,540	1,616	-4.7
600,000 - 699,999	53	47	12.8	1,068	1,295	-17.5
700,000 - 799,999	31	36	-13.9	661	860	-23.1
800,000 - 899,999	26	18	44.4	444	521	-14.8
900,000 - 999,999	20	12	66.7	266	311	-14.5
1,000,000 - 1,249,999	15	15	0.0	282	320	-11.9
1,250,000 - 1,499,999	15	12	25.0	283	259	9.3
1,500,000 +	23	15	53.3	325	299	8.7
<b>TOTALS</b>	<b>615</b>	<b>603</b>	<b>2.0</b>	<b>10315</b>	<b>13077</b>	<b>-21.1</b>

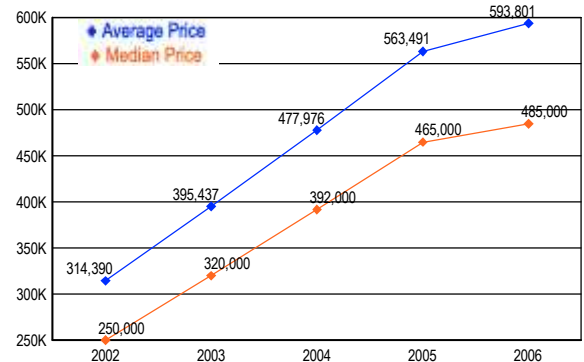
## MARKET BY PRICE RANGE



## SETTLEMENTS

Price Range	New This Month			Year-to-Date		
	2006	2005	% Change	2006	2005	% Change
0 - 149,999	0	0	0.0	0	6	-100.0
150,000 - 199,999	1	0	100.0	7	24	-70.8
200,000 - 299,999	38	46	-17.4	496	1,118	-55.6
300,000 - 399,999	160	204	-21.6	2,435	3,229	-24.6
400,000 - 499,999	192	211	-9.0	2,517	3,058	-17.7
500,000 - 599,999	118	111	6.3	1,531	1,719	-10.9
600,000 - 699,999	66	93	-29.0	1,059	1,325	-20.1
700,000 - 799,999	42	61	-31.1	693	868	-20.2
800,000 - 899,999	27	34	-20.6	430	543	-20.8
900,000 - 999,999	13	26	-50.0	253	340	-25.6
1,000,000 - 1,249,999	30	28	7.1	328	395	-17.0
1,250,000 - 1,499,999	18	22	-18.2	231	257	-10.1
1,500,000 +	14	29	-51.7	314	296	6.1
<b>TOTALS</b>	<b>719</b>	<b>865</b>	<b>-16.9</b>	<b>10294</b>	<b>13178</b>	<b>-21.9</b>

## AVERAGE & MEDIAN PRICE



DATA SOURCE: Metropolitan Regional Information Systems, Inc. (MRIS)

NOTES: Properties not listed through this Multiple Listing Service are not reflected. The term "sales" represents ratified purchase contracts. Current year information is preliminary and subject to revision. Current year-to-date contract information may not equal the sum of the monthly contract totals reported in