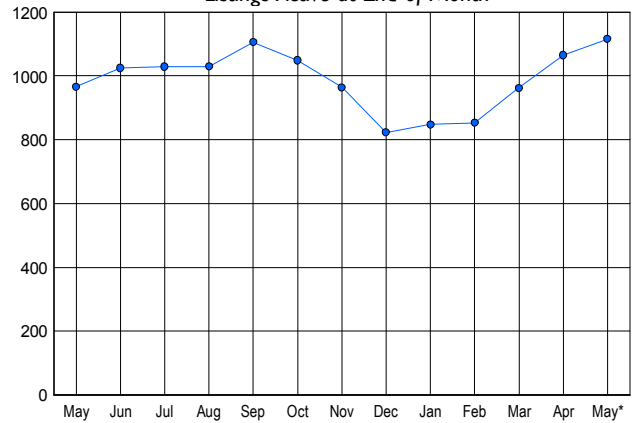


LISTINGS

| Price Range | New This Month | | | Total Actives | | |
|-----------------------|----------------|------------|-------------|---------------|------------|-------------|
| | 2007 | 2006 | % Change | 2007 | 2006 | % Change |
| 0 - 149,999 | 6 | 11 | -45.5 | 22 | 16 | 37.5 |
| 150,000 - 199,999 | 37 | 34 | 8.8 | 94 | 46 | 104.3 |
| 200,000 - 299,999 | 191 | 210 | -9.0 | 445 | 368 | 20.9 |
| 300,000 - 399,999 | 147 | 139 | 5.8 | 335 | 313 | 7.0 |
| 400,000 - 499,999 | 48 | 63 | -23.8 | 115 | 126 | -8.7 |
| 500,000 - 599,999 | 17 | 20 | -15.0 | 48 | 49 | -2.0 |
| 600,000 - 699,999 | 6 | 9 | -33.3 | 12 | 19 | -36.8 |
| 700,000 - 799,999 | 6 | 7 | -14.3 | 16 | 13 | 23.1 |
| 800,000 - 899,999 | 2 | 4 | -50.0 | 8 | 6 | 33.3 |
| 900,000 - 999,999 | 2 | 0 | 200.0 | 4 | 2 | 100.0 |
| 1,000,000 - 1,249,999 | 1 | 0 | 100.0 | 4 | 1 | 300.0 |
| 1,250,000 - 1,499,999 | 3 | 0 | 300.0 | 5 | 2 | 150.0 |
| 1,500,000 + | 6 | 2 | 200.0 | 8 | 5 | 60.0 |
| TOTALS | 472 | 499 | -5.4 | 1116 | 966 | 15.5 |

INVENTORY TREND

Listings Active at End of Month

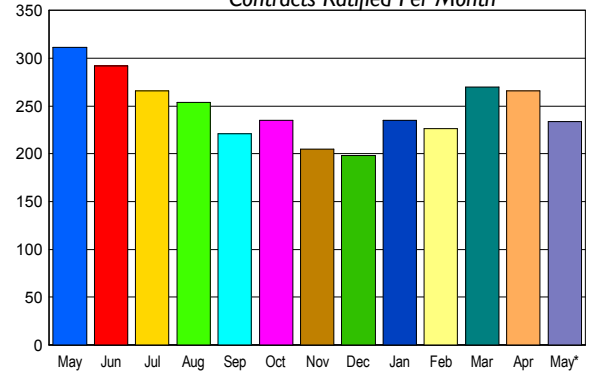


CONTRACTS

| Price Range | New This Month | | | Year-To-Date | | |
|-----------------------|----------------|------------|--------------|--------------|-------------|--------------|
| | 2007 | 2006 | % Change | 2007 | 2006 | % Change |
| 0 - 149,999 | 5 | 6 | -16.7 | 18 | 20 | -10.0 |
| 150,000 - 199,999 | 22 | 40 | -45.0 | 112 | 160 | -30.0 |
| 200,000 - 299,999 | 99 | 127 | -22.0 | 497 | 652 | -23.8 |
| 300,000 - 399,999 | 57 | 82 | -30.5 | 306 | 370 | -17.3 |
| 400,000 - 499,999 | 32 | 31 | 3.2 | 138 | 131 | 5.3 |
| 500,000 - 599,999 | 14 | 10 | 40.0 | 48 | 43 | 11.6 |
| 600,000 - 699,999 | 2 | 3 | -33.3 | 26 | 17 | 52.9 |
| 700,000 - 799,999 | 1 | 3 | -66.7 | 13 | 9 | 44.4 |
| 800,000 - 899,999 | 1 | 5 | -80.0 | 5 | 8 | -37.5 |
| 900,000 - 999,999 | 1 | 0 | 100.0 | 4 | 4 | 0.0 |
| 1,000,000 - 1,249,999 | 0 | 1 | -100.0 | 0 | 2 | -100.0 |
| 1,250,000 - 1,499,999 | 0 | 0 | 0.0 | 6 | 0 | 600.0 |
| 1,500,000 + | 0 | 3 | -100.0 | 4 | 6 | -33.3 |
| TOTALS | 234 | 311 | -24.8 | 1177 | 1422 | -17.2 |

SALES TREND

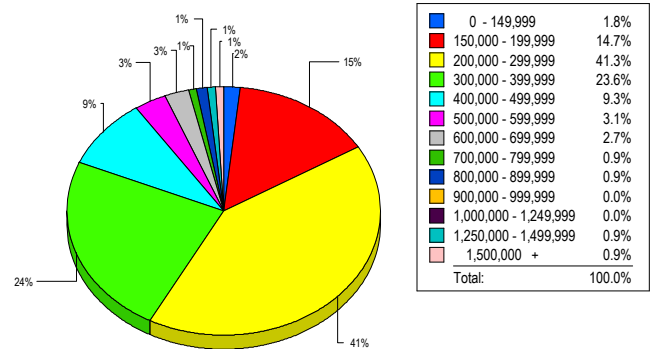
Contracts Ratified Per Month



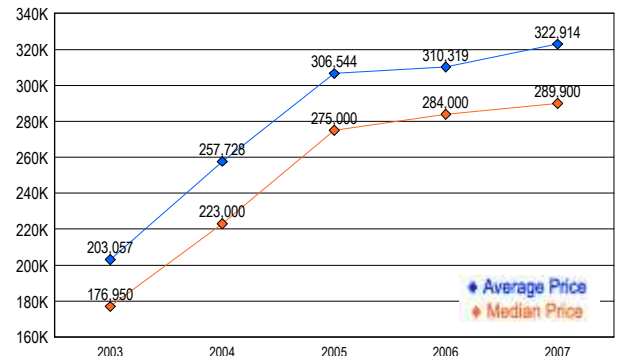
SETTLEMENTS

| Price Range | New This Month | | | Year-To-Date | | |
|-----------------------|----------------|------------|--------------|--------------|-------------|--------------|
| | 2007 | 2006 | % Change | 2007 | 2006 | % Change |
| 0 - 149,999 | 4 | 6 | -33.3 | 15 | 18 | -16.7 |
| 150,000 - 199,999 | 33 | 30 | 10.0 | 110 | 121 | -9.1 |
| 200,000 - 299,999 | 93 | 143 | -35.0 | 460 | 590 | -22.0 |
| 300,000 - 399,999 | 53 | 58 | -8.6 | 292 | 332 | -12.0 |
| 400,000 - 499,999 | 21 | 26 | -19.2 | 113 | 119 | -5.0 |
| 500,000 - 599,999 | 7 | 5 | 40.0 | 36 | 34 | 5.9 |
| 600,000 - 699,999 | 6 | 5 | 20.0 | 24 | 15 | 60.0 |
| 700,000 - 799,999 | 2 | 2 | 0.0 | 8 | 8 | 0.0 |
| 800,000 - 899,999 | 2 | 2 | 0.0 | 3 | 5 | -40.0 |
| 900,000 - 999,999 | 0 | 1 | -100.0 | 6 | 5 | 20.0 |
| 1,000,000 - 1,249,999 | 0 | 0 | 0.0 | 0 | 1 | -100.0 |
| 1,250,000 - 1,499,999 | 2 | 0 | 200.0 | 5 | 0 | -500.0 |
| 1,500,000 + | 2 | 2 | 0.0 | 3 | 5 | -40.0 |
| TOTALS | 225 | 280 | -19.6 | 1075 | 1253 | -14.2 |

MARKET BY PRICE RANGE



AVERAGE & MEDIAN PRICE



DATA SOURCE: Metropolitan Regional Information Systems, Inc. (MRIS)

NOTES: Properties not listed through this Multiple Listing Service are not reflected. The term "sales" represents ratified purchase contracts. Current year information is preliminary and subject to revision. Current year-to-date contract information may not equal the sum of the monthly contract totals reported in